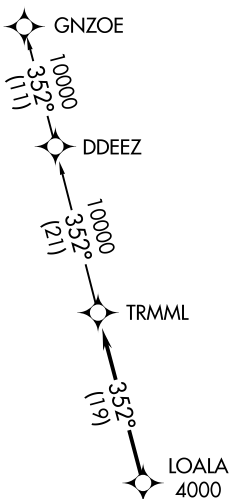
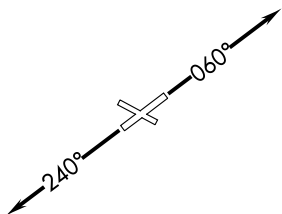


**TOP ALTITUDE:
ASSIGNED BY ATC**



ATIS
 134.55
 CLNC DEL
 121.6
 GND CON
 121.6
 ANN ARBOR TOWER ★
 120.3 (CTAF)
 DETROIT DEP CON
 118.95 284.0

TAKEOFF MINIMUMS:
 Rwy 6, 24: Standard.
 Rwy 12, 30: NA-Environmental.



NOTE: RNAV 1.
 NOTE: RADAR required.
 NOTE: DME/DME/IRU or GPS required.
 NOTE: Turbojet departures at/above 10000,
 maintain 280K until advised by ATC.

NOTE: Chart not to scale.

DEPARTURE ROUTE DESCRIPTION

TAKEOFF RUNWAY 6: Climb on heading 060° or as assigned for RADAR vectors to cross LOALA at or above 4000, thence...

TAKEOFF RUNWAY 24: Climb on heading 240° or as assigned for RADAR vectors to cross LOALA at or above 4000, thence...

....on track 352° to TRMML, then on (transition). Maintain ATC assigned altitude, expect filed altitude 10 minutes after departure.

GNZOE TRANSITION (TRMML3.GNZOE):