

| | | | |
|--|------------------------|---|------------------------|
| VORTAC SVM 114.3 Chan 90 | APP CRS 213° | Rwy ldg TDZE 3505 831 | Apt Elev 839 |
|--|------------------------|---|------------------------|

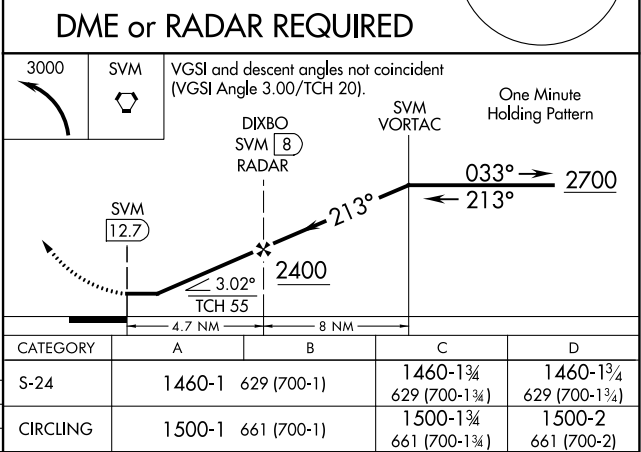
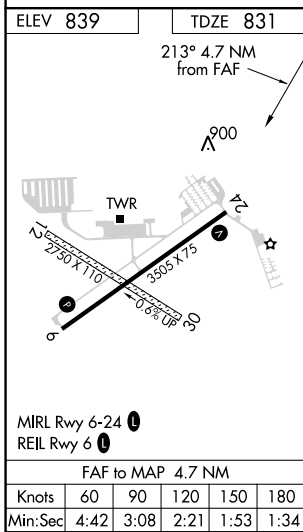
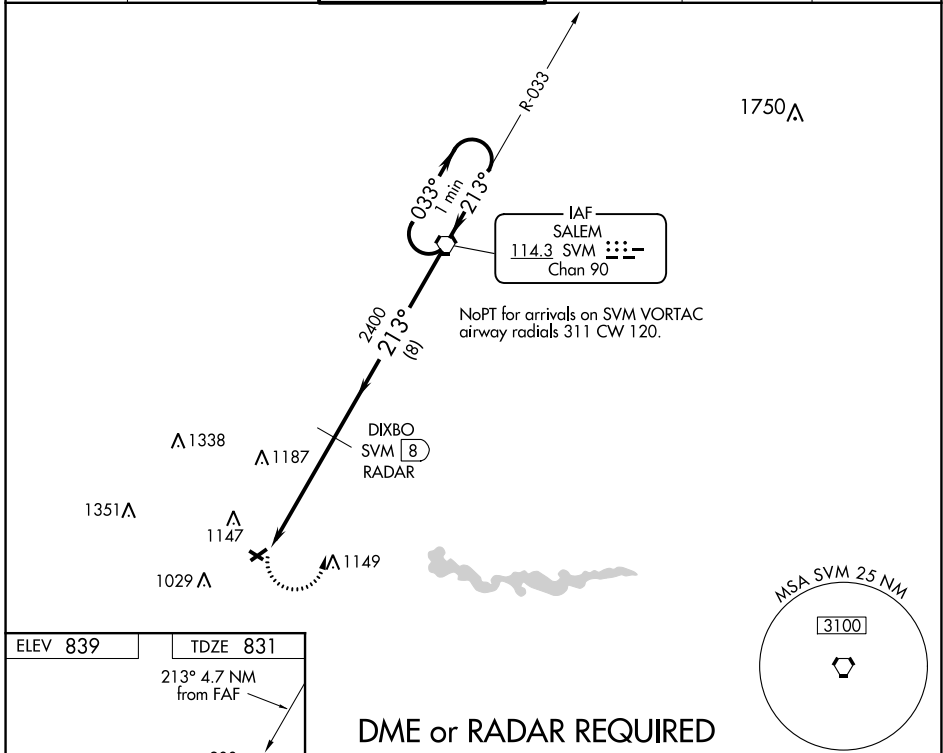
VOR RWY 24

ANN ARBOR MUNI (ARB)

⚠ Inop table does not apply. Rwy 24 helicopter visibility reduction below 3/4 SM NA.
 ⚠ When local altimeter setting not received, use Willow Run altimeter setting and increase all MDAs 40 feet and increase visibility S-24 Cat C/D visibility 1/8 SM and Circling Cat C/D visibility 1/4 SM. Circling NA to Rwy 12 and 30.

MISSED APPROACH: Climbing left turn to 3000 direct SVM VORTAC and hold.

| | | | | | |
|-----------------------|--|--|-------------------------|--------------------------|------------------------|
| ATIS 134.55 | DETROIT APP CON 118.95 284.0 | ANN ARBOR TOWER ★ 120.3 (CTAF) 0 | GND CON 121.6 | CLNC DEL 121.6 | UNICOM 123.0 |
|-----------------------|--|--|-------------------------|--------------------------|------------------------|



EC-1, 16 JUL 2020 to 13 AUG 2020

EC-1, 16 JUL 2020 to 13 AUG 2020