

WAAS CH <b>58030</b> <b>W14A</b>	APP CRS <b>141°</b>	Rwy Idg <b>3999</b> TDZE <b>1034</b> Apt Elev <b>1035</b>
--	------------------------	---

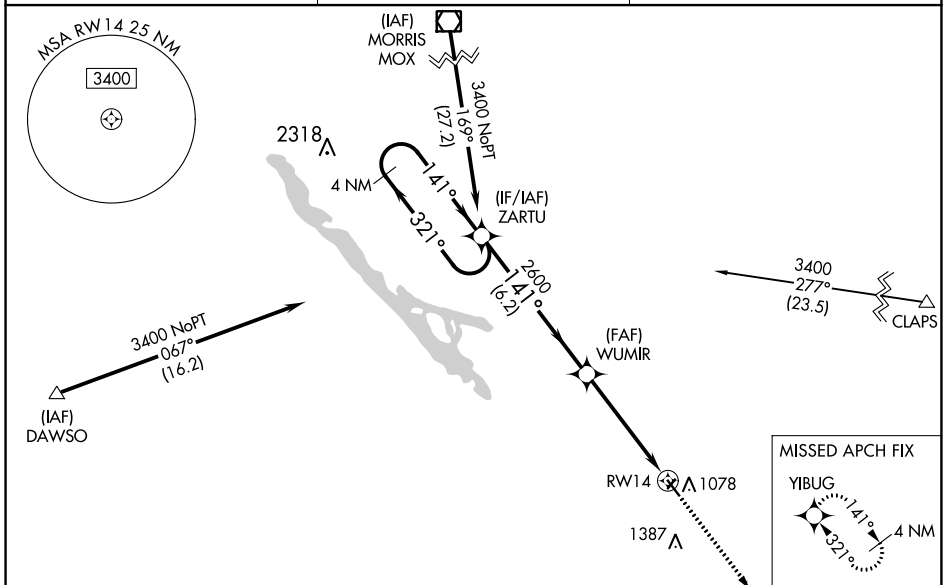
# RNAV (GPS) RWY 14

MONTEVIDEO-CHIPPEWA COUNTY (MVE)

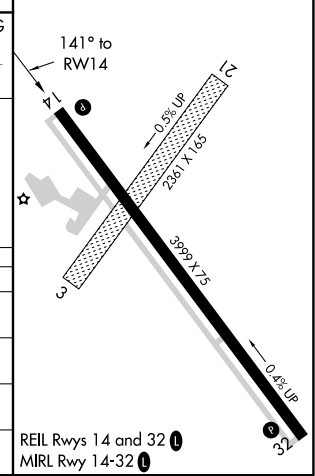
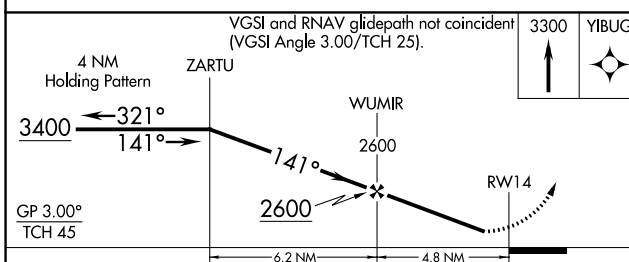
**⚠** Baro-VNAV NA when using Granite Falls altimeter setting. For uncompensated Baro-VNAV systems, LNAV/VNAV NA below -30°C (-22°F) or above 54°C (130°F). When local altimeter setting not received, use Granite Falls altimeter setting and increase all DA 36 feet and MDA 40 feet, increase LNAV Cats C and D visibility 1/8 mile and Circling Cat D visibility 1/4 mile. DME/DME RNP-0.3 NA. Helicopter visibility reduction below 1 SM NA. When VGSI inop, Straight-in and Circling Rwy 14 procedures NA at night. Circling to Rwy 3-21 NA.

**MISSED APPROACH:**  
Climb to 3300 direct YIBUG and hold.

AWOS-3 <b>111.6</b>	MINNEAPOLIS CENTER <b>125.5 323.1</b>	UNICOM <b>122.8 (CTAF) 0</b>
------------------------	--	---------------------------------



ELEV 1035	TDZE 1034
-----------	-----------



CATEGORY	A	B	C	D
LPV DA		1284-1	250 (300-1)	
LNAV/VNAV DA		1284-1	250 (300-1)	
LNAV MDA	1520-1 486 (500-1)		1520-1 3/8 486 (500-1 3/8)	
CIRCLING	1560-1 525 (600-1)		1560-1 1/2 525 (600-1 1/2)	1700-2 665 (700-2)

REIL Rwy 14 and 32 0  
MIRL Rwy 14-32 0

NC-1, 16 JUL 2020 to 13 AUG 2020

NC-1, 16 JUL 2020 to 13 AUG 2020