

WAAS CH 86430	APP CRS 321°	Rwy Idg 3999
W32A		TDZE 1028
		Apt Elev 1035

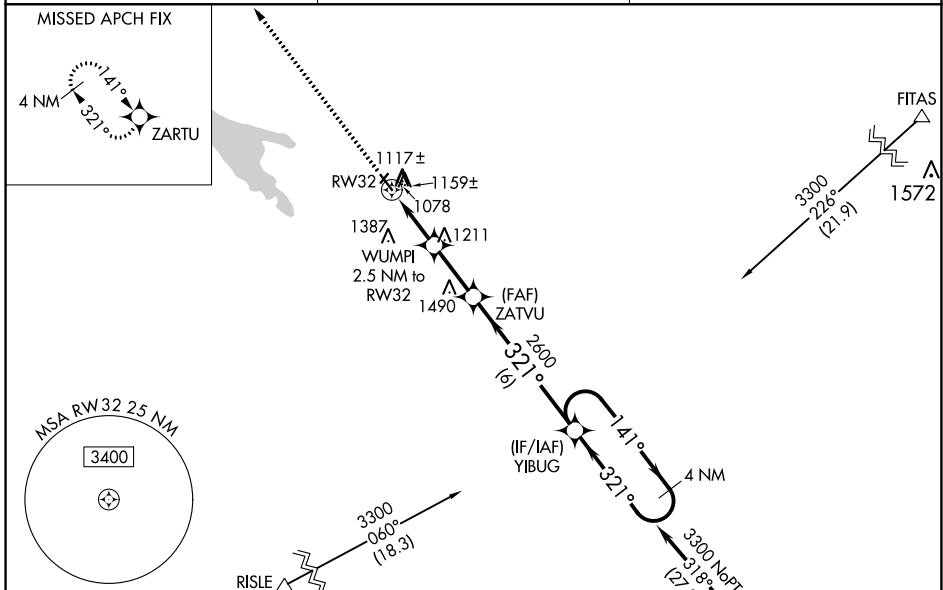
RNAV (GPS) RWY 32

MONTEVIDEO-CHIPPEWA COUNTY (MVE)

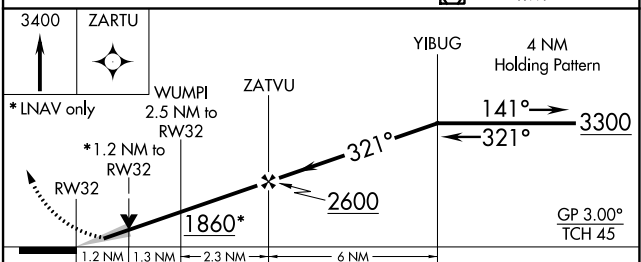
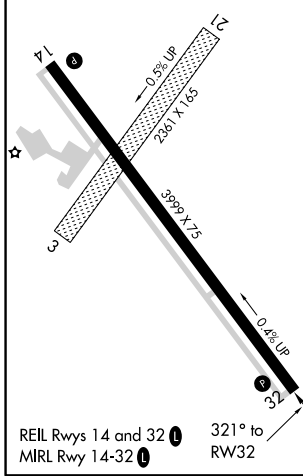
⚠ Circling to Rwy 14 NA at night. Baro-VNAV NA when using Granite Falls altimeter setting. For uncompensated Baro-VNAV systems, LNAV/VNAV NA below -30°C (-22°F) or above 54°C (130°F). When local altimeter setting not received, use Granite Falls altimeter setting and increase all DA 36 feet and MDA 40 feet and increase LNAV/VNAV visibility all Cats 1/8 mile, increase LNAV visibility Cats C and D 1/8 mile, and increase Circling visibility Cat D 1/4 mile. DME/DME RNP -0.3 NA. Circling to Rwy 3-21 NA. Helicopter visibility reduction below 1 SM NA.

MISSED APPROACH:
Climb to 3400 direct ZARTU and hold.

AWOS-3 111.6	MINNEAPOLIS CENTER 125.5 323.1	UNICOM 122.8 (CTAF) 0
------------------------	--	---------------------------------



ELEV 1035	TDZE 1028
-----------	-----------



CATEGORY	A	B	C	D
LPV DA	1234-1 206 (200-1)			
LNAV/VNAV DA	1428-1 3/8 400 (400-1 3/8)			
LNAV MDA	1420-1	392 (400-1)	1420-1 1/8	392 (400-1 1/8)
CIRCLING	1560-1	525 (600-1)	1560-1 1/2	1700-2 665 (700-2)

NC-1, 16 JUL 2020 to 13 AUG 2020

NC-1, 16 JUL 2020 to 13 AUG 2020