

LOC/DME I-PHY <b>111.1</b> Chan <b>48</b>	APP CRS <b>033°</b>	Rwy Idg <b>4748</b> TDZE <b>1177</b> Apt Elev <b>1182</b>
---	------------------------	---

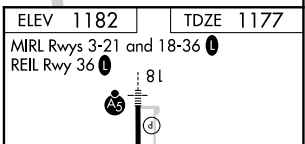
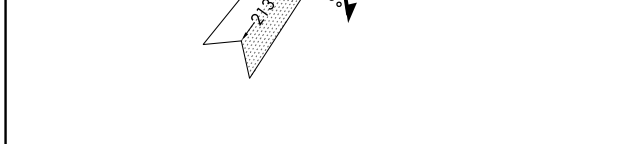
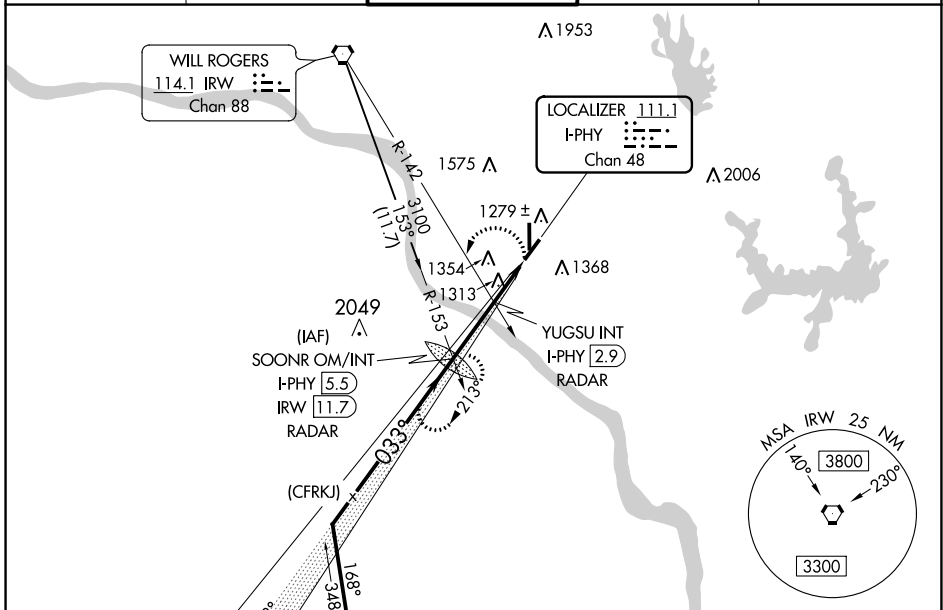
# LOC RWY 3

UNIVERSITY OF OKLAHOMA WESTHEIMER (OUN)

**⚠** When local altimeter setting not received, use Will Rogers World altimeter setting and increase all MDA 60 feet; increase S-3 Cat C/D visibility ¼ mile, Circling Cat C/D ¼ mile. For inop MALS increase S-3 Cat C/D visibility to 1½ mile. For inop MALS when using Will Rogers World altimeter setting, increase S-3 Cat C/D visibility to 1½ mile. Circling NA southeast of Rwy 3 and 21.

**MALS**  
MISSED APPROACH: Climbing left turn to 3100 on I-PHY SW course to SOONR OM/INT/I-PHY 5.5 DME/RADAR and hold, continue climb-in-hold to 3100.

AWOS-3 <b>119.55</b>	OKE CITY APP CON <b>120.45 288.325</b>	WESTHEIMER TOWER* <b>118.0</b> (CTAF) <b>0</b>	GND CON <b>121.6</b>	UNICOM <b>122.95</b>
-------------------------	---	---	-------------------------	-------------------------



CATEGORY	SOONR OM/INT I-PHY (5.5)/RADAR		YUGSU INT I-PHY (2.9) RADAR	
	3100		2700	
S-3	1580-¾	403 (400-¾)	1580-1	403 (400-1)
CIRCLING	1660-1	478 (500-1)	1940-2¼ 758 (800-2¼)	1940-2½ 758 (800-2½)

ELEV 1182	TDZE 1177
MRL Rwy 3-21 and 18-36	REIL Rwy 36
FAF to MAP 4.5 NM	
Knots	60 90 120 150 180
Min:Sec	4:30 3:00 2:15 1:48 1:30

SC-1, 16 JUL 2020 to 13 AUG 2020

SC-1, 16 JUL 2020 to 13 AUG 2020