

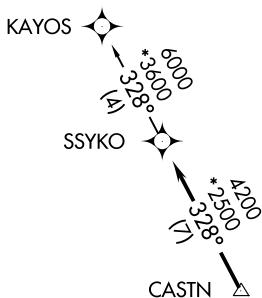
(SSYKO3.SSYKO) 17341

SSYKO THREE DEPARTURE (RNAV)

UNIVERSITY OF OKLAHOMA WESTHEIMER (OUN)
AL-5672 (FAA) NORMAN, OKLAHOMA

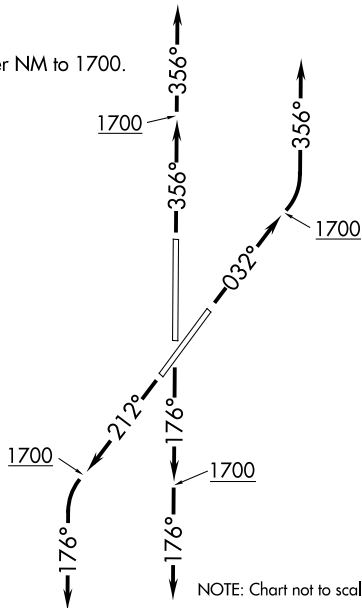
AWOS-3
119.55
GND CON
121.6
WESTHEIMER TOWER *
118.0
OKE CITY DEP CON
120.45 288.325

**TOP ALTITUDE:
ASSIGNED BY ATC**



TAKEOFF MINIMUMS

Rwys 3, 18, 21, 36: Standard with minimum climb of 500' per NM to 1700.



- NOTE: RADAR required.
- NOTE: DME/DME/IRU or GPS required.
- NOTE: RNAV 1.

NOTE: Chart not to scale.



DEPARTURE ROUTE DESCRIPTION

TAKEOFF RUNWAY 3: Climb on heading 032° to 1700, then left turn heading 356° or as assigned by ATC, expect RADAR vectors to CASTN, thence . . .

TAKEOFF RUNWAY 18: Climb on heading 176° to 1700, then heading 176° or as assigned by ATC, expect RADAR vectors to CASTN, thence . . .

TAKEOFF RUNWAY 21: Climb on heading 212° to 1700, then left turn heading 176° or as assigned by ATC, expect RADAR vectors to CASTN, thence . . .

TAKEOFF RUNWAY 36: Climb on heading 356° to 1700, then heading 356° or as assigned by ATC, expect RADAR vectors to CASTN, thence . . .

. . . on track 328° to SSYKO, then on (transition). Maintain 3000 or as assigned by ATC. Expect filed altitude 10 minutes after departure.

KAYOS TRANSITION (SSYKO3.KAYOS)

SSYKO THREE DEPARTURE (RNAV)

(SSYKO3.SSYKO) 07DEC17

NORMAN, OKLAHOMA
UNIVERSITY OF OKLAHOMA WESTHEIMER (OUN)

SC-1, 16 JUL 2020 to 13 AUG 2020

SC-1, 16 JUL 2020 to 13 AUG 2020