

(TEBRD3.TEBRD) 17341

# TEBRD THREE DEPARTURE (RNAV)

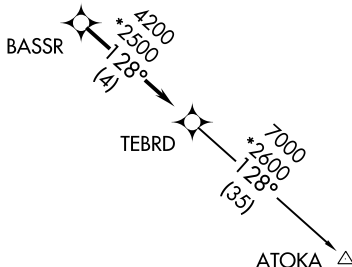
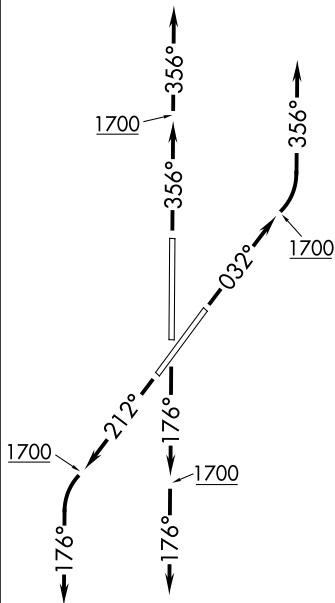
UNIVERSITY OF OKLAHOMA WESTHEIMER (OUN)  
NORMAN, OKLAHOMA

**TOP ALTITUDE:  
ASSIGNED BY ATC**

AWOS-3  
119.55  
GND CON  
121.6  
WESTHEIMER TOWER \*  
118.0  
OKE CITY DEP CON  
120.45 288.325

### TAKEOFF MINIMUMS

Rwys 3, 18, 21, 36: Standard  
with minimum climb of 500'  
per NM to 1700.



- NOTE: RADAR required.
- NOTE: DME/DME/IRU or GPS required.
- NOTE: RNAV 1.

NOTE: Chart not to scale.

### DEPARTURE ROUTE DESCRIPTION

**TAKEOFF RWY 3:** Climb on heading 032° to 1700, then left turn heading 356° or as assigned by ATC, expect RADAR vectors to BASSR, thence . . .

**TAKEOFF RWY 18:** Climb on heading 176° to 1700, then heading 176° or as assigned by ATC, expect RADAR vectors to BASSR, thence . . .

**TAKEOFF RWY 21:** Climb on heading 212° to 1700, then left turn heading 176° or as assigned by ATC, expect RADAR vectors to BASSR, thence . . .

**TAKEOFF RWY 36:** Climb on heading 356° to 1700, then heading 356° or as assigned by ATC, expect RADAR vectors to BASSR, thence . . .

. . . on track 128° to TEBRD, then on (transition). Maintain 3000 or as assigned by ATC. Expect filed altitude 10 minutes after departure.

ATOKA TRANSITION (TEBRD3.ATOKA)

SC-1, 16 JUL 2020 to 13 AUG 2020

SC-1, 16 JUL 2020 to 13 AUG 2020

TEBRD THREE DEPARTURE (RNAV)  
(TEBRD3.TEBRD) 07DEC17

NORMAN, OKLAHOMA  
UNIVERSITY OF OKLAHOMA WESTHEIMER (OUN)