

WAAS CH 77635 W32A	APP CRS 318°	Rwy Idg 4650 TDZE 1204 Apt Elev 1204
--	------------------------	---

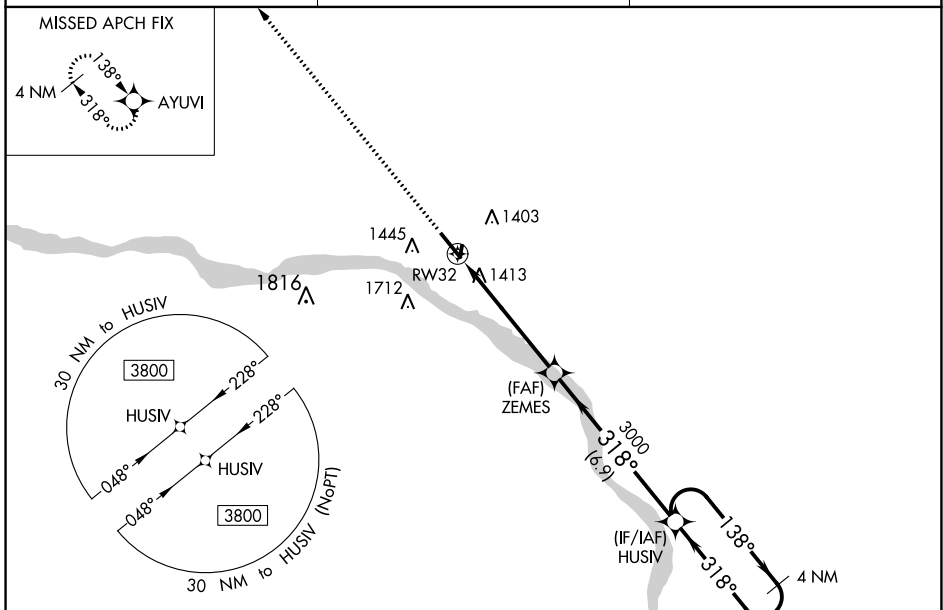
RNAV (GPS) RWY 32

FREMONT MUNI (F'E/T)

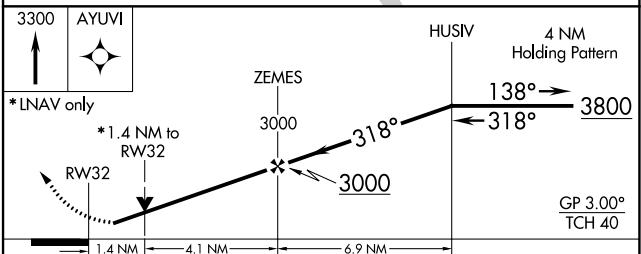
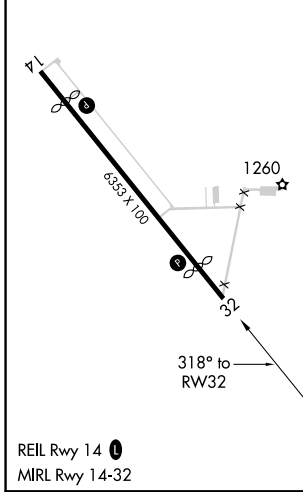
⚠ For uncompensated Baro-VNAV systems, LNAV/VNAV NA below -17°C (2°F) or above 54°C (130°F).
⚠ DME/DME RNP-0.3 NA. Helicopter visibility reduction below 1 SM NA. When local altimeter setting not received, use Blair altimeter setting and increase all DA/MDA 60 feet; increase LNAV Cat C visibility 1/8 mile, and LNAV/VNAV visibility 1/4 mile all Cats. Baro-VNAV and VDP NA when using Blair altimeter setting.

MISSED APPROACH: Climb to 3300 direct AYUVI and hold.

AWOS-3 121.275	OMAHA APP CON 120.1 354.05	UNICOM 122.8 (CTAF) ①
--------------------------	--------------------------------------	---------------------------------



ELEV 1204	D	TDZE 1204
------------------	----------	------------------



CATEGORY	A	B	C	D
LPV DA	1456-1 252 (300-1)			NA
LNAV/VNAV DA	1712-1 3/4 508 (600-1 3/4)			NA
LNAV MDA	1680-1	476 (500-1)	1680-1 3/8 476 (500-1 3/8)	NA
C CIRCLING	1760-1	556 (600-1)	2020-2 1/2 816 (900-2 1/2)	NA

NC-2, 16 JUL 2020 to 13 AUG 2020

NC-2, 16 JUL 2020 to 13 AUG 2020