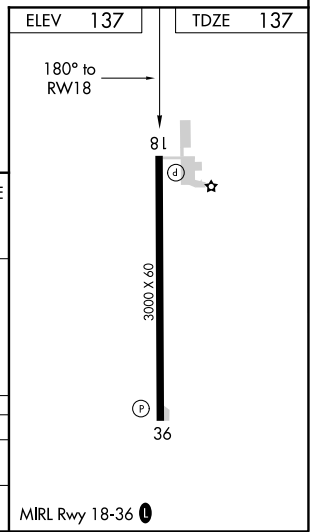
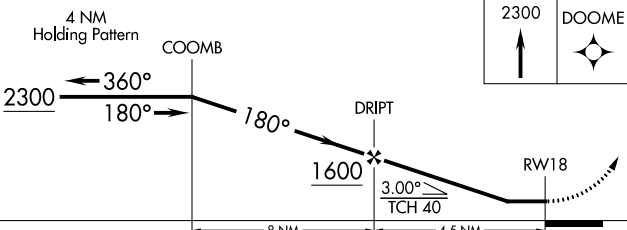
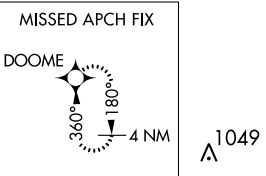
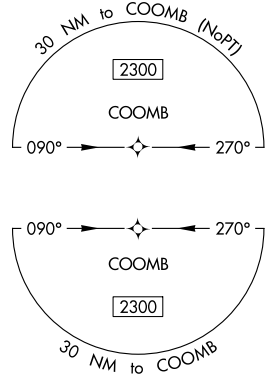
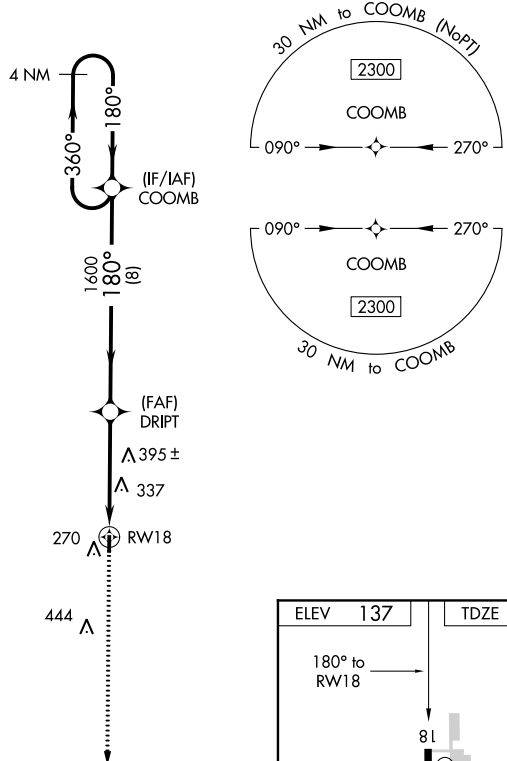


APP CRS	Rwy Idg	3000
180°	TDZE	137
	Apt Elev	137

RNAV (GPS) RWY 18

RULEVILLE-DREW (M37)

<p>▽ DME/DME RNP-0.3 NA. Use Cleveland altimeter setting; when not received, use Greenwood altimeter setting and increase all MDA 40 feet and increase LNAV and Circling Cat C visibility ¼ mile. Procedure NA at night. Helicopter visibility reduction below 1 SM NA.</p> <p>△ NA</p>	<p>MISSED APPROACH: Climb to 2300 direct DOOME and hold.</p>
	<p>MEMPHIS CENTER 135.875 269.35</p>



CATEGORY	A	B	C	D
LNAV MDA	680-1	543 (600-1)	680-1 3/8 543 (600-1 3/8)	NA
C CIRCLING	680-1 543 (600-1)	720-1 583 (600-1)	780-1 3/4 643 (700-1 3/4)	NA

MIRL Rwy 18-36

SC-4, 16 JUL 2020 to 13 AUG 2020

SC-4, 16 JUL 2020 to 13 AUG 2020