

VORTAC SQS 114.7 Chan 94	APP CRS 324°	Rwy Idg TDZE Apt Elev	N/A N/A 137
--	------------------------	-----------------------------	--

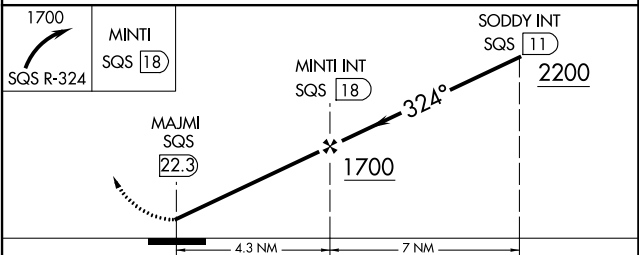
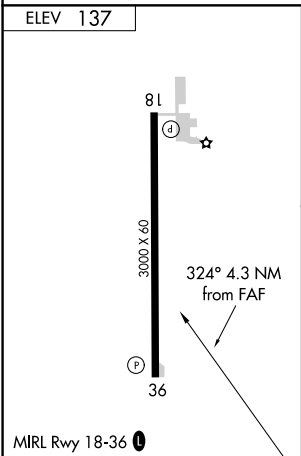
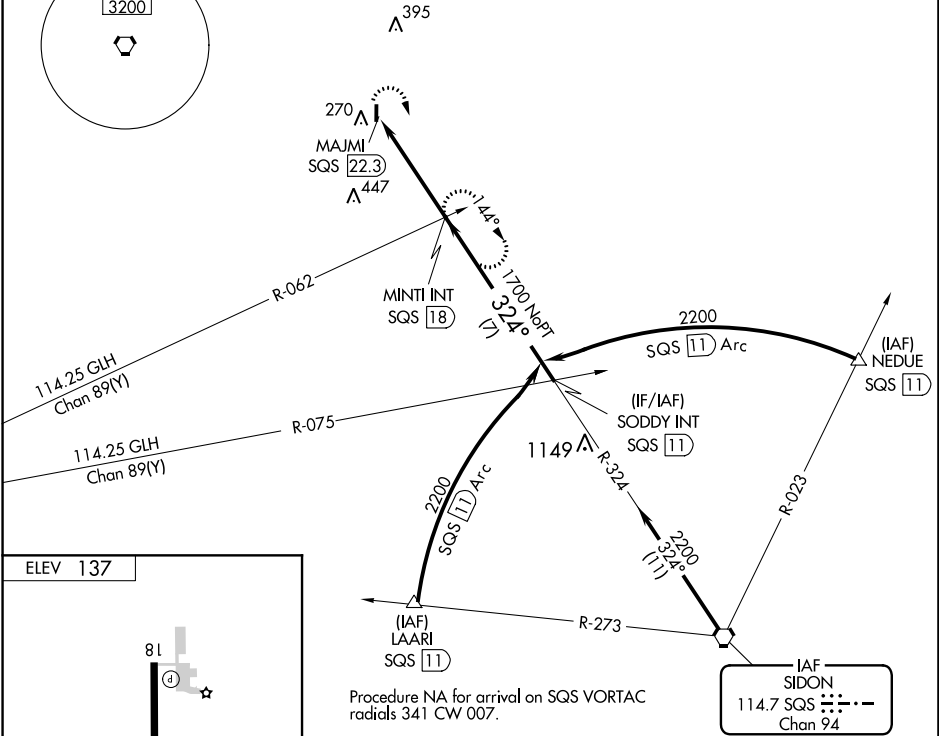
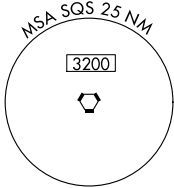
VOR-A
RULEVILLE-DREW (M37)

▽ Use Cleveland altimeter setting; when not received, use Greenwood altimeter setting and increase all MDA 40 feet, increase Cat C visibility ¼ mile.
△ NA Helicopter visibility reduction below 1 SM NA. Procedure NA at night.

MISSED APPROACH: Climbing right turn to 1700 on SQS VORTAC R-324 to MINTI INT/SQS 18 DME and hold.

MEMPHIS CENTER
135.875 269.35

CTAF
122.9 0



FAF to MAP 4.3 NM					
Knots	60	90	120	150	180
Min:Sec	4:18	2:52	2:09	1:43	1:26

CATEGORY	A	B	C	D
☑ CIRCLING	620-1 483 (500-1)	720-1 583 (600-1)	780-1¾ 643 (700-1¾)	NA

SC-4, 16 JUL 2020 to 13 AUG 2020

SC-4, 16 JUL 2020 to 13 AUG 2020