

APP CRS	Rwy Idg	4802
086°	TDZE	605
	Apt Elev	606

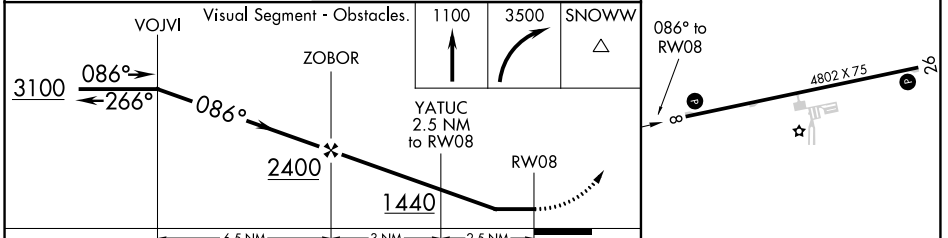
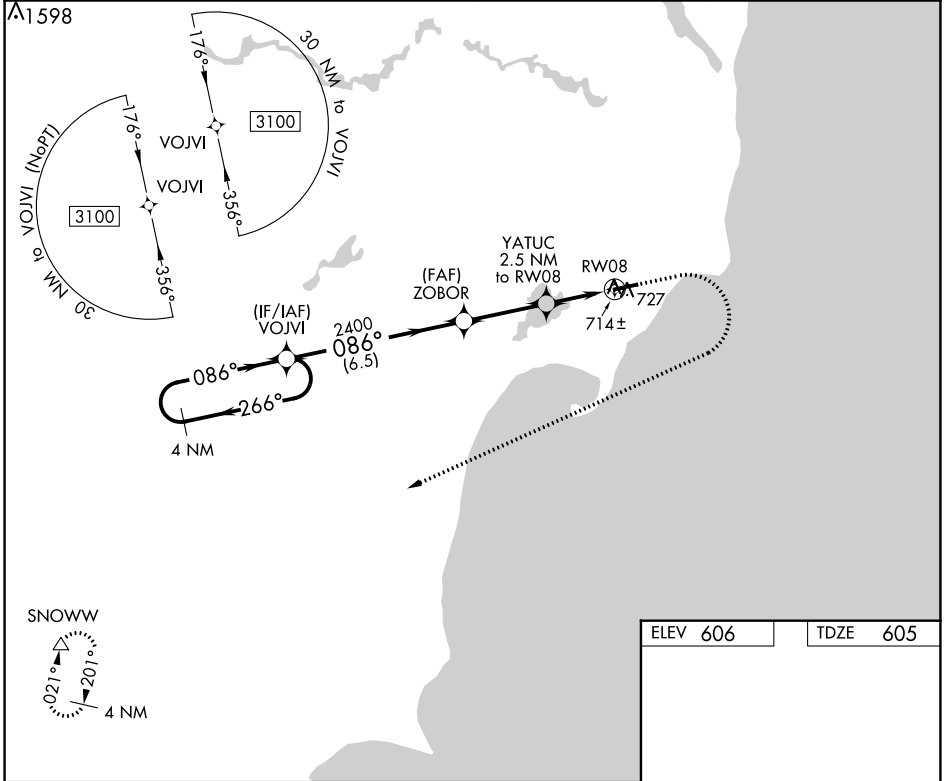
RNAV (GPS) RWY 8

IOSCO COUNTY (6D9)

▼ DME/DME RNP-0.3 NA. Procedure NA at night. Helicopter visibility reduction below 1 SM NA. Use Oscoda altimeter setting: when not received, use Bad Axe altimeter setting and increase all MDA 100 feet; increase LNAV Cats C and D visibilities ¼ mile, increase Circling visibility Cat C ¼ mile.

▲ NA MISSED APPROACH: Climb to 1100 then climbing right turn to 3500 direct SNOWW and hold.

OSC AWOS-3 118.7	MINNEAPOLIS CENTER 125.475 269.45	UNICOM 122.8 (CTAF)	122.85 0
----------------------------	---	-------------------------------	------------------------



CATEGORY	A	B	C	D
LNAV MDA	1000 - 1	395 (400-1)	1000 - 1½ 395 (400-1½)	
C CIRCLING	1120 - 1	514 (600-1)	1120 - 1½ 514 (600-1½)	1160 - 2 554 (600-2)

REIL Rwys 8 and 26 **0**
MIRL Rwy 8-26 **0**

EC-1, 16 JUL 2020 to 13 AUG 2020

EC-1, 16 JUL 2020 to 13 AUG 2020