

APP CRS	Rwy Idg	<b>3907</b>
<b>359°</b>	TDZE	<b>512</b>
	Apt Elev	<b>516</b>

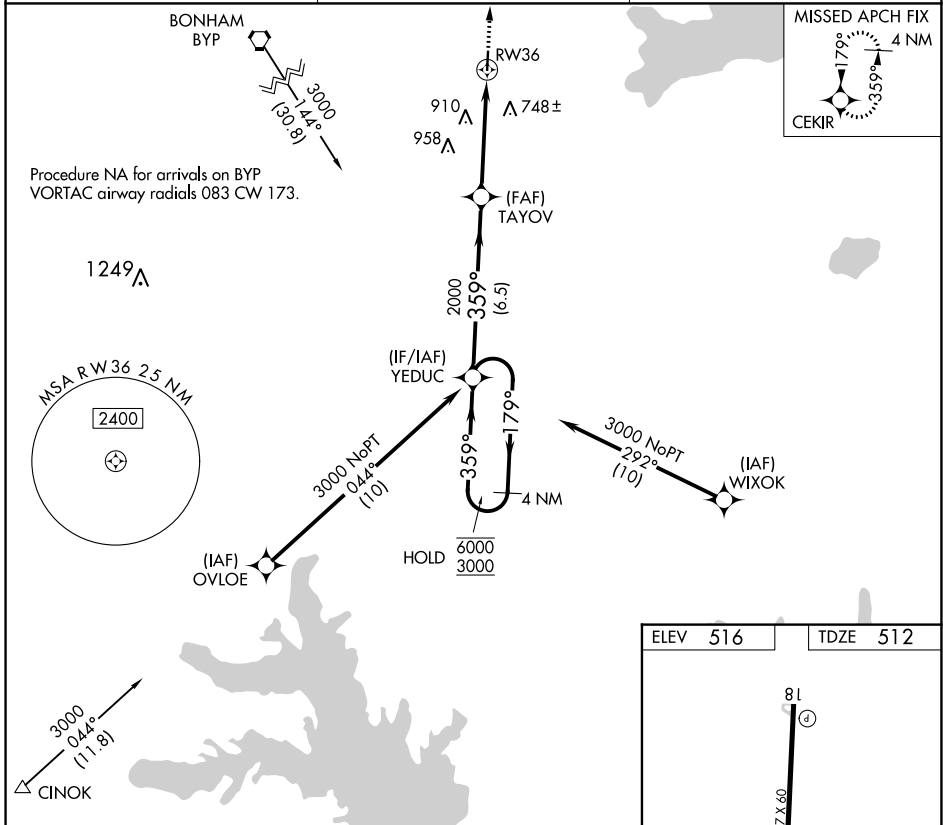
# RNAV (GPS) RWY 36

COMMERCE MUNI (2F7)

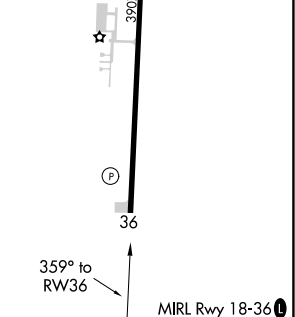
RNP APCH.  
 Use Greenville altimeter setting, when not received, use Sulphur Springs altimeter setting and increase all MDAs 20 feet. Rwy 36 helicopter visibility reduction below 3/4 SM NA.

MISSED APPROACH: Climb to 3000 direct CEKIR and hold.

GVT AWOS-3 <b>133.425</b>	FORT WORTH CENTER <b>127.6 254.3</b>	CTAF <b>122.9</b>
------------------------------	---	----------------------



4 NM Holding Pattern	YEDUC	TAYOV	RW36
6000 ← 179°	3000 → 359°	2000	
	6.5 NM	4.6 NM	
CATEGORY	A	B	C
LNNAV MDA	1140-1	628 (700-1)	NA



SC-2, 16 JUL 2020 to 13 AUG 2020

SC-2, 16 JUL 2020 to 13 AUG 2020