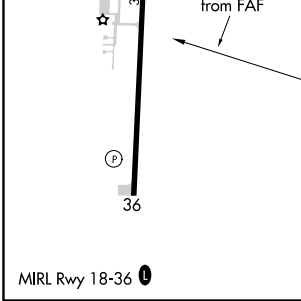
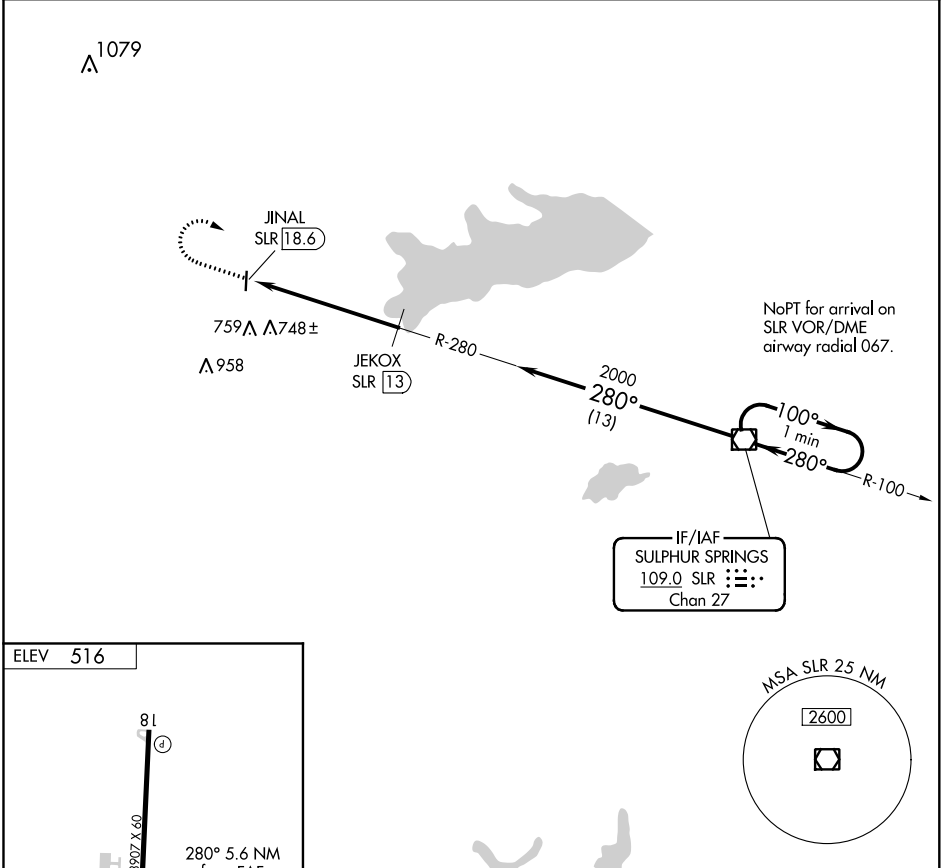


VOR/DME SLR <b>109.0</b> Chan <b>27</b>	APP CRS <b>280°</b>	Rwy Idg TDZE Apt Elev	<b>N/A</b> <b>N/A</b> <b>516</b>
---	------------------------	--------------------------	--

**VOR-A**  
COMMERCE MUNI (2F7)

<b>▽</b> <b>△</b> NA	Use Greenville altimeter setting; when not received, use Sulphur Springs altimeter setting. DME required.	MISSED APPROACH: Climb to 2200 then right turn direct SLR VOR/DME and hold.
-------------------------	---	---

GVT AWOS-3 <b>133.425</b>	FORT WORTH CENTER <b>127.6 254.3</b>	CTAF <b>122.9</b>
------------------------------	---	----------------------



ELEV 516	2200	SLR	JEKOX SLR 13	SLR VOR/DME	One Minute Holding Pattern
	↑	↷	⊠		
		JINAL SLR 18.6	2000	280°	100° →
				← 280°	2000
		5.6 NM	13 NM		
CATEGORY	A	B	C	D	
CIRCLING	1180-1	664 (700-1)		NA	

SC-2, 16 JUL 2020 to 13 AUG 2020

SC-2, 16 JUL 2020 to 13 AUG 2020