

| | | | |
|--|------------------------|-----------------------------|---|
| WAAS CH 70536 W25A | APP CRS 255° | Rwy Idg TDZE Apt Elev | 4001 1065 1067 |
|--|------------------------|-----------------------------|---|

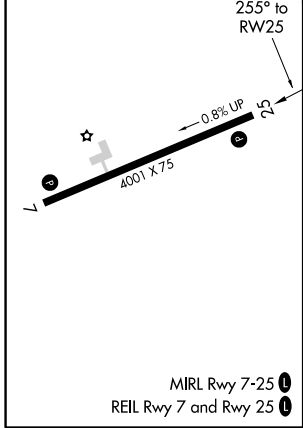
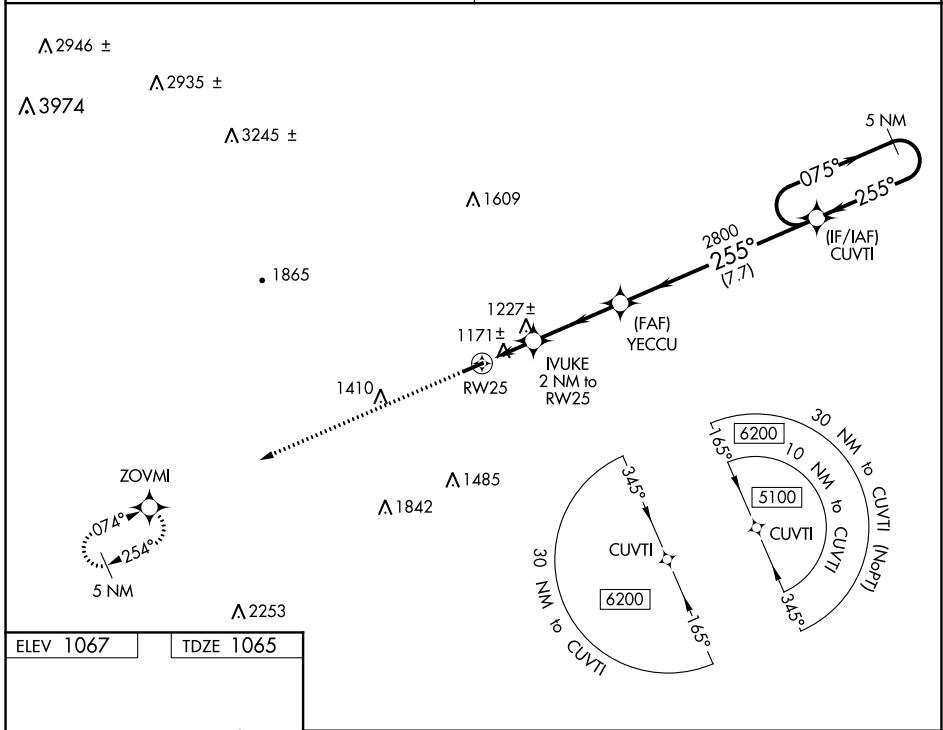
RNAV (GPS) RWY 25

ELKIN MUNI (ZEF)

▼ Obtain local altimeter setting on CTAF; when not received, use Mount Airy altimeter setting and increase MDA 80 ft and LP and Circling Cats C/D
 ▲ NA visibility ¼ mile. DME/DME RNP-0.3 NA. Procedure NA at night. Helicopter visibility reduction below 1 SM NA.

MISSED APPROACH: Climb to 4900 direct ZOVMI and hold, continue climb-in-hold to 4900.

| | |
|---------------------------------------|---------------------------------|
| ATLANTA CENTER 125.15 263.0 | UNICOM 123.05(CTAF) 0 |
|---------------------------------------|---------------------------------|



| | | | |
|--|-------------|----------------------|---|
| 4900 ZOVMI Visual Segment - Obstacles. | | 5 NM Holding Pattern | |
| ↑ | | ★ | |
| RW25 | | YECCU | CUVTI |
| 1720 | | 2800 | 5100 |
| 2 NM | | 3.4 NM | 7.7 NM |
| CATEGORY | A | B | C |
| LP MDA | 1440-1 | 375 (400-1) | 1440-1 ¹ / ₈ 375 (400-1 ¹ / ₈) |
| LNAV MDA | 1480-1 | 415 (500-1) | 1480-1 ³ / ₈ 415 (500-1 ³ / ₈) |
| CIRCLING | 1540-1 | 1600-1 | 1680-1 ³ / ₄ |
| | 473 (500-1) | 533 (600-1) | 613 (700-1 ³ / ₄) |
| | | | 1840-2 ¹ / ₂ |
| | | | 773 (800-2 ¹ / ₂) |

SE-2, 16 JUL 2020 to 13 AUG 2020

SE-2, 16 JUL 2020 to 13 AUG 2020