

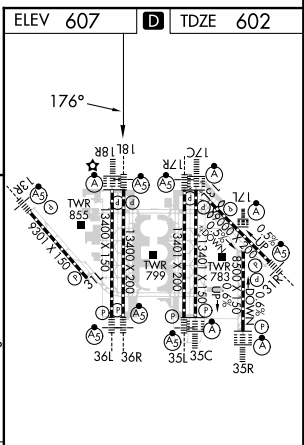
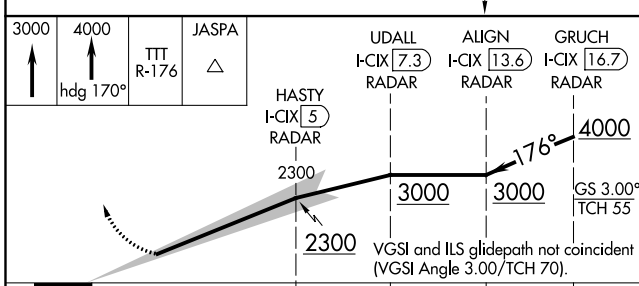
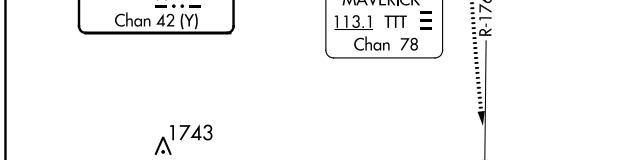
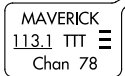
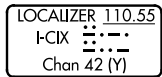
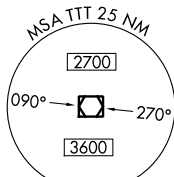
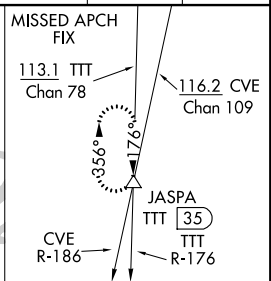
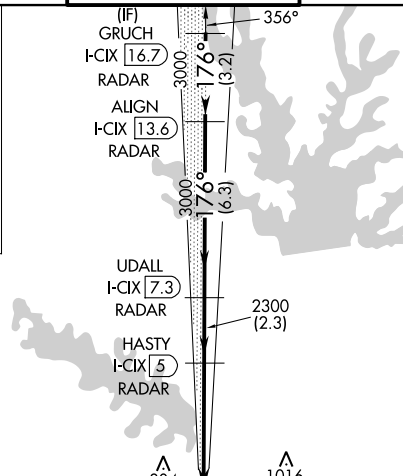
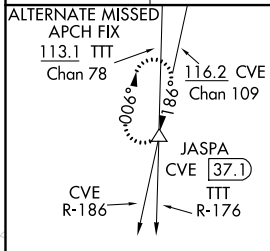
LOC/DME I-CIX 110.55	APP CRS 176°	Rwy Idg 13400 TDZE 602 Apt Elev 607
Chan 42 (Y)		

CONVERGING ILS RWY 18L

DALLAS-FORT WORTH INTL (DFW)

DME and RADAR required.		MALSR	MISSED APPROACH: Climb to 3000, then climb to 4000 on heading 170° and TTT VOR/DME R-176 to JASPA/TTT 35 DME and hold.
Simultaneous approach authorized with CONVERGING ILS RWY 13R.			

D-ATIS ARR 123.775 DEP 135.925	REGIONAL APP CON 118.425	DFW TOWER 126.55 127.5 EAST 124.15 134.9 WEST	GND CON 121.65 121.8 EAST 121.85 WEST	CLNC DEL 128.25	CPDLC
--	------------------------------------	---	---	---------------------------	-------



CATEGORY	A	B	C	D	HIRL all Rwys REIL Rwys 13L and 31L TDZ/CL all Rwys except 13L and 31L
S-ILS 18L		802/18	200 (200-1/2)		

SC-2, 16 JUL 2020 to 13 AUG 2020

SC-2, 16 JUL 2020 to 13 AUG 2020