

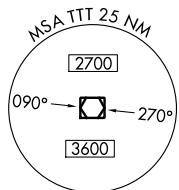
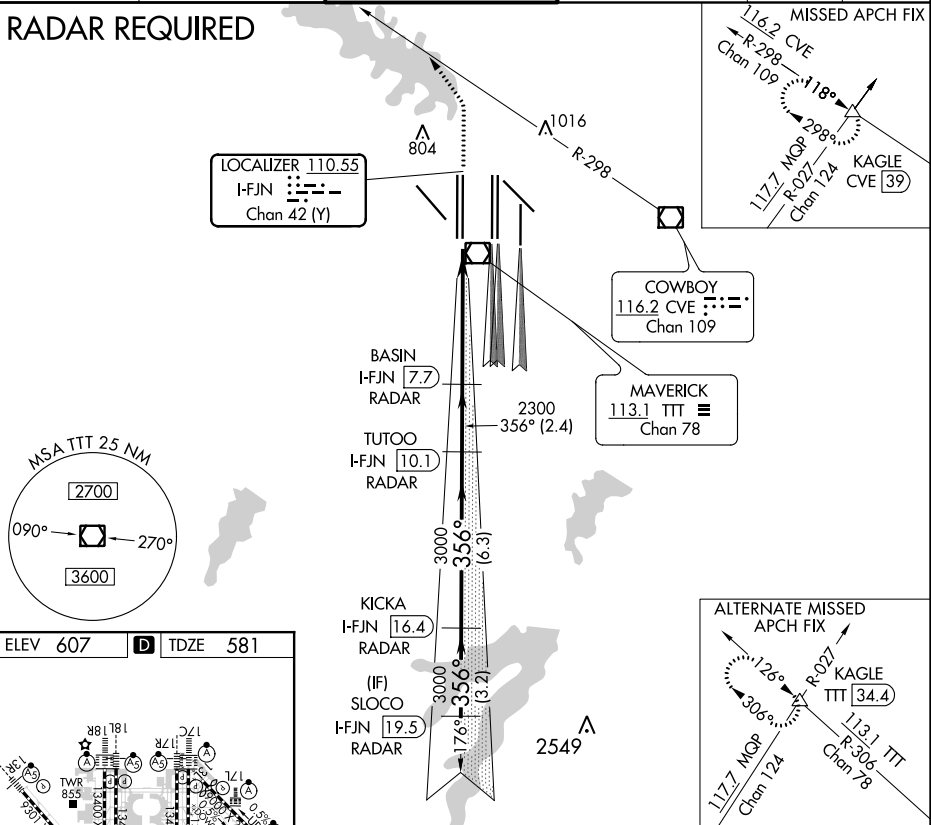
LOC/DME I-FJN 110.55 Chan 42 (Y)	APP CRS 356°	Rwy Idg 13400 TDZE 581 Apt Elev 607
--	------------------------	--

CONVERGING ILS RWY 36R

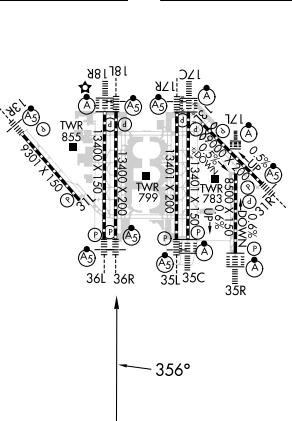
DALLAS-FORT WORTH INTL (DFW)

<p>Simultaneous approach authorized with Converging ILS Rwy 31R. DME or Radar required.</p>		<p>MALSR</p>	<p>MISSED APPROACH: Climb to 1100, then climbing left turn to 3000 on heading 320° and CVE VOR/DME R-298 to KAGLE INT/CVE 39 DME and hold.</p>			
D-ATIS ARR 123.775 DEP 135.925	REGIONAL APP CON 118.425	DFW TOWER 126.55 127.5 EAST 124.15 134.9 WEST		GND CON 121.65 121.8 EAST 121.85 WEST	CLNC DEL 128.25	CPDLC

RADAR REQUIRED



ELEV 607	D	TDZE 581
-----------------	----------	-----------------



1100	3000	CVE R-298	KAGLE	BASIN I-FJN 7.7 RADAR	TUTOO I-FJN 10.1 RADAR	KICKA I-FJN 16.4 RADAR	(IF) SLOCO I-FJN 19.5 RADAR
hdg 320°				2300		356°	
				3000		3000	
				2300		GS 3.00° TCH 50	
				5.3 NM		3.2 NM	
				2.4 NM		6.3 NM	
				A		B	
				C		D	
				781/18		200 (200-½)	
				S-ILS 36R			

VGSI and ILS glidepath not coincident (VGSI Angle 3.00/TCH 66).

SC-2, 16 JUL 2020 to 13 AUG 2020

SC-2, 16 JUL 2020 to 13 AUG 2020