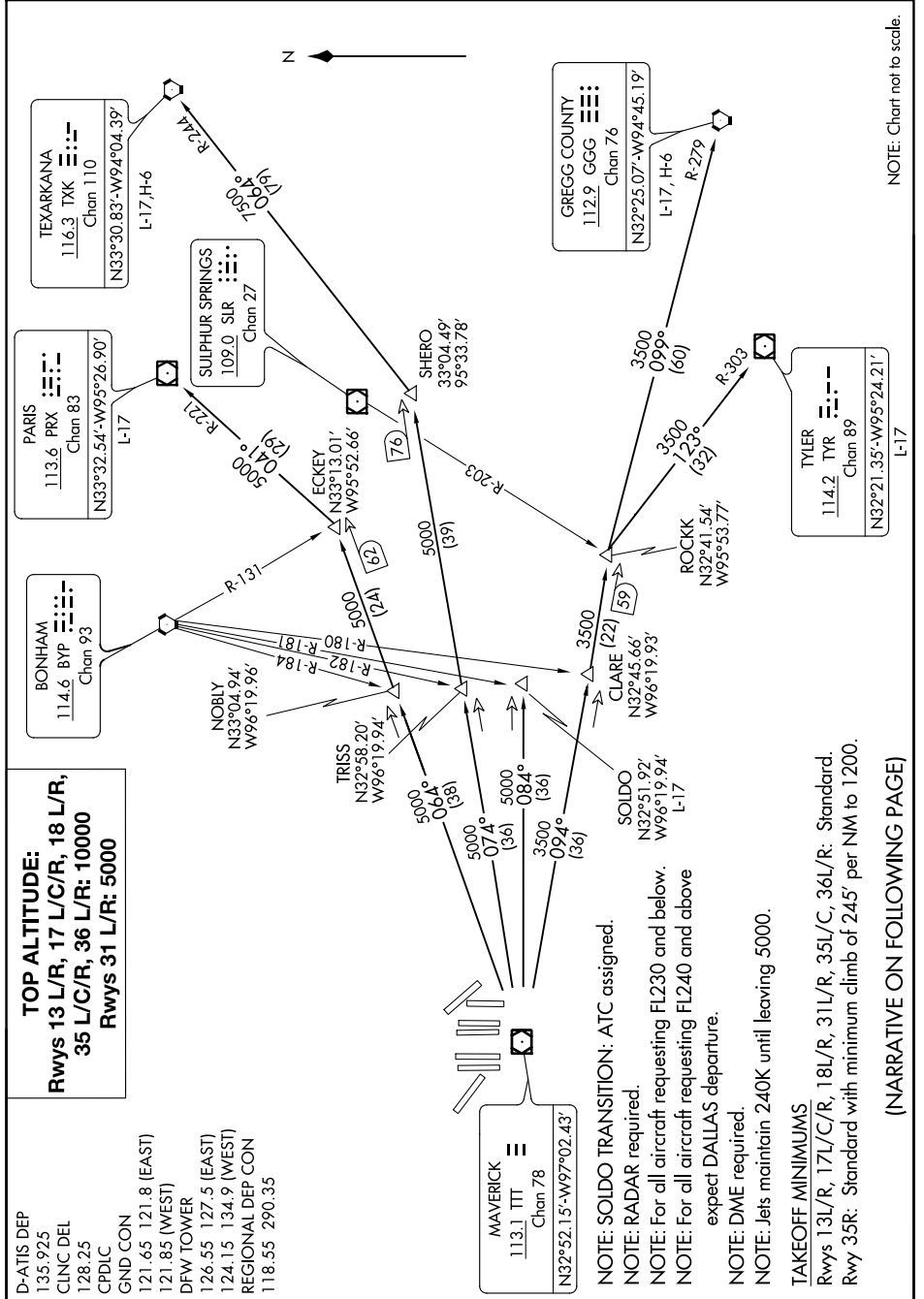


SC-2, 16 JUL 2020 to 13 AUG 2020

TOP ALTITUDE:
Rwys 13 L/R, 17 L/C/R, 18 L/R,
35 L/C/R, 36 L/R: 10000
Rwys 31 L/R: 5000

D-ATIS DEP 135.925
CLNC DEL 128.25
CPDLC 121.65 121.8 (EAST)
121.85 (WEST)
DFW TOWER 126.55 127.5 (EAST)
124.15 134.9 (WEST)
REGIONAL DEP CON 118.55 290.35



NOTE: Chart not to scale.

SC-2, 16 JUL 2020 to 13 AUG 2020

(NARRATIVE ON FOLLOWING PAGE)