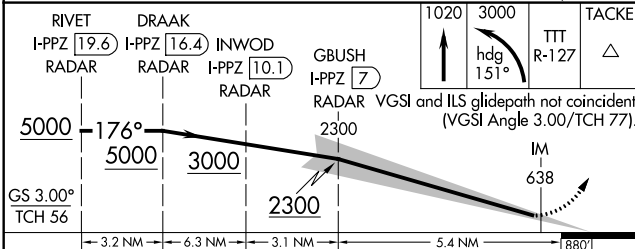
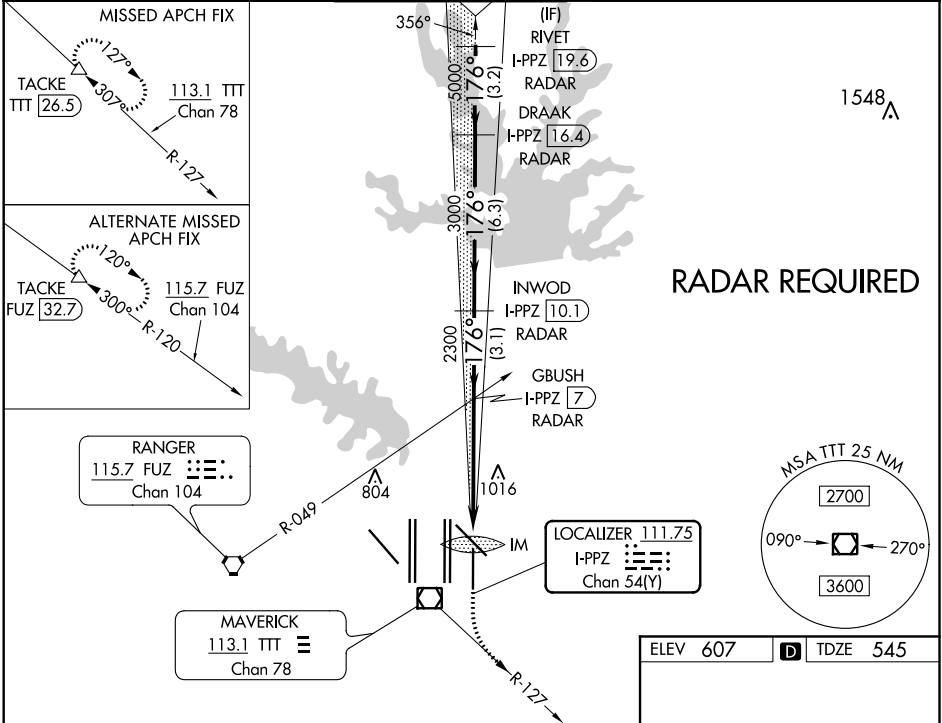


LOC/DME I-PPZ <b>111.75</b> Chan <b>54 (Y)</b>	APP CRS <b>176°</b>	Rwy Idg TDZE <b>545</b> Apt Elev <b>607</b>
------------------------------------------------------	------------------------	---------------------------------------------------

# ILS RWY 17L (CAT II & III)

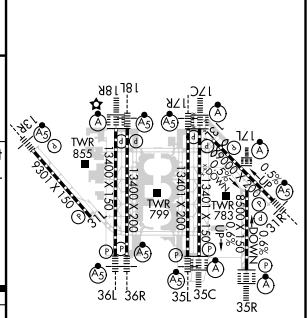
DALLAS-FORT WORTH INTL (DFW)

<p>Simultaneous approach authorized with Rwy 17C/R and Rwy 18L/R. DME required.</p>		<p>ALSIF-2</p>	<p>MISSED APPROACH: Climb to 1020 then climbing left turn to 3000 on heading 151° and TTT VOR/DME R-127 to TACKE/TTT 26.5 DME and hold.</p>		
D-ATIS ARR <b>123.775</b> DEP <b>135.925</b>	REGIONAL APP CON <b>119.4</b>	DFW TOWER <b>126.55 127.5 EAST</b> <b>124.15 134.9 WEST</b>	GND CON <b>121.65 121.8 EAST</b> <b>121.85 WEST</b>	CLNC DEL <b>128.25</b>	CPDLC



CATEGORY	A	B	C	D
S-ILS 17L	CAT II RA 122/12 100 DA 645			
S-ILS 17L	CAT IIIa RVR 07			
S-ILS 17L	CAT IIIb RVR 06			
S-ILS 17L	CAT IIIc NA			

ELEV 607	TDZE 545
----------	----------



## CATEGORY II & III ILS - SPECIAL AIRCREW & AIRCRAFT CERTIFICATION REQUIRED

HIRL all Rwys  
REIL Rwys 13L and 31L  
TDZ/CL all Rwys except 13L and 31L

SC-2, 16 JUL 2020 to 13 AUG 2020

SC-2, 16 JUL 2020 to 13 AUG 2020