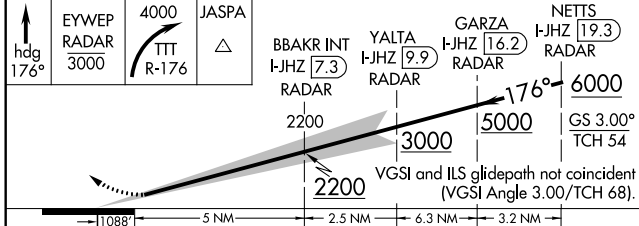
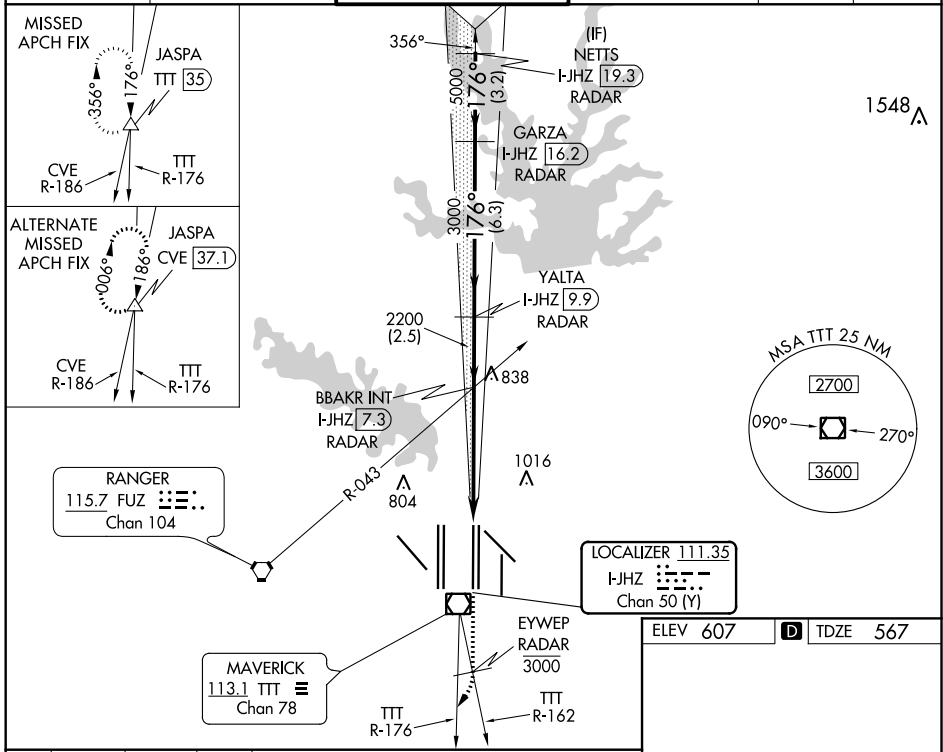


LOC/DME I-JHZ <b>111.35</b> Chan 50 (Y)	APP CRS <b>176°</b>	Rwy Idg TDZE Apt Elev	<b>13401</b> <b>567</b> <b>607</b>
---	------------------------	-----------------------------	--

# ILS RWY 17R (SA CAT I & CAT II)

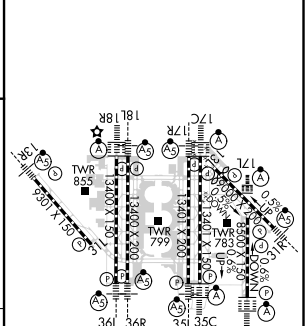
DALLAS-FORT WORTH INTL (DFW)

DME and RADAR required.		MALSR		MISSED APPROACH: Climb on heading 176° to cross EYWEP/RADAR at or below 3000, then climbing right turn to 4000 on TTT VOR/DME R-176 to JASPA/TTT 35 DME and hold.	
SA Cat I: Requires specific OPSPEC, MSPEC, or LOA approval and use of HUD to DH. SA Cat II: Reduced lighting; Requires specific OPSPEC, MSPEC, or LOA approval and use of Autoland to touchdown. Simultaneous approach authorized with Rwy 17L, 18L/R.		AS			
D-ATIS ARR <b>123.775</b> DEP <b>135.925</b>	REGIONAL APP CON <b>127.075</b>	DFW TOWER <b>126.55 127.5 EAST</b> <b>124.15 134.9 WEST</b>	GND CON <b>121.65 121.8 EAST</b> <b>121.85 WEST</b>	CLNC DEL <b>128.25</b>	CPDLC



CATEGORY	A	B	C	D
S-ILS 17R	SA CAT I	RA 160/14	150 DA 717	
S-ILS 17R	SA CAT II	RA 98/12	100 DA 667	

ELEV 607	D	TDZE 567
----------	---	----------



## SA CATEGORY I & II ILS SPECIAL AIRCREW & AIRCRAFT CERTIFICATION REQUIRED

HIRL all Rwys  
REIL Rwy 13L and 31L  
TDZ/CL all Rwy except 13L and 31L

SC-2, 16 JUL 2020 to 13 AUG 2020

SC-2, 16 JUL 2020 to 13 AUG 2020