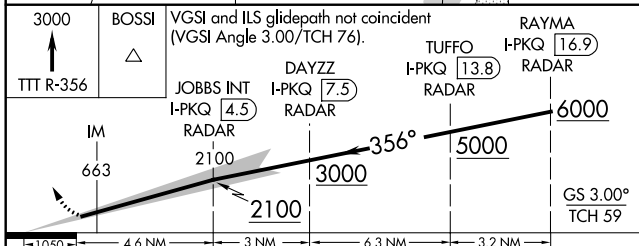
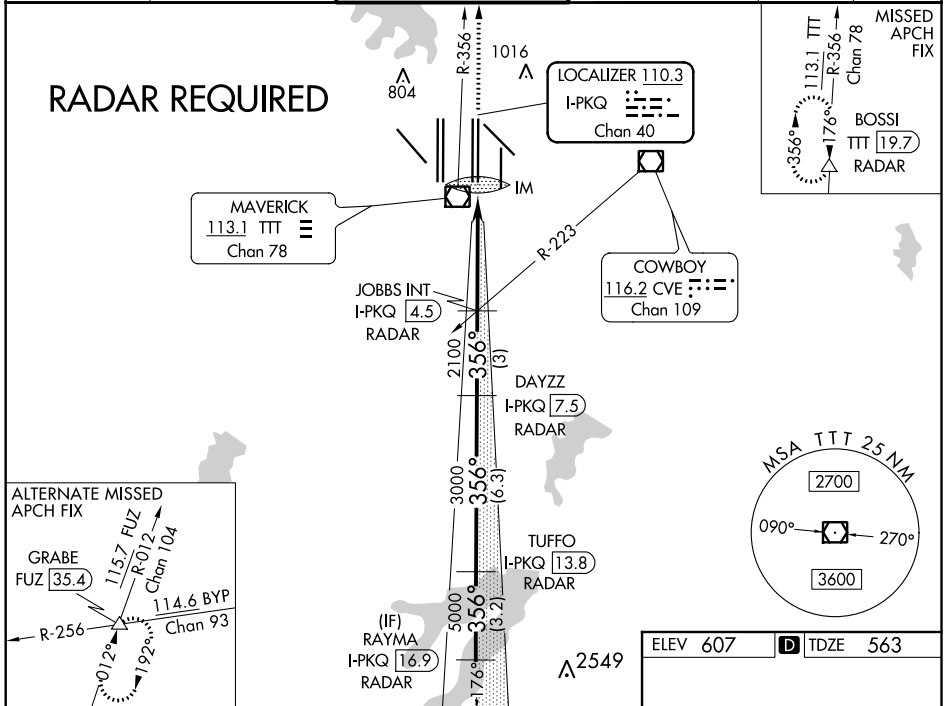


LOC/DME I-PKQ 110.3 Chan 40	APP CRS 356°	Rwy Idg TDZE 13401 563 Apt Elev 607
--	------------------------	---

ILS RWY 35C (CAT II & III)

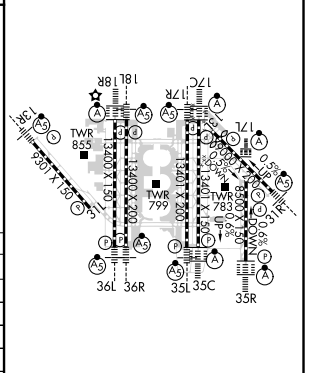
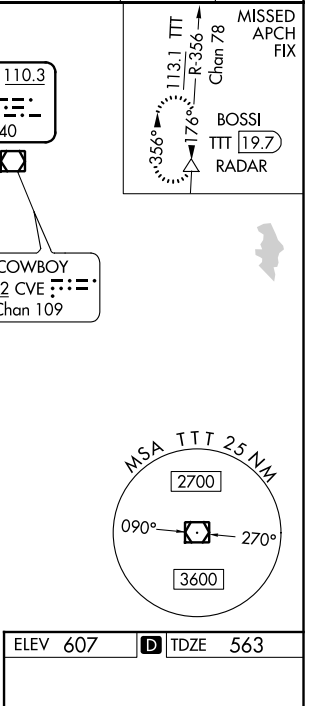
DALLAS-FORT WORTH INTL (DFW)

D-ATIS ARR 123.775 DEP 135.925		REGIONAL APP CON 127.075	DFW TOWER 126.55 127.5 EAST 124.15 134.9 WEST	GND CON 121.65 121.8 EAST 121.85 WEST	CLNC DEL 128.25	CPDLC
--	--	------------------------------------	---	---	---------------------------	-------



CATEGORY	A	B	C	D
S-ILS 35C	CAT II RA 100/12 100 DA 663			
S-ILS 35C	CAT IIIa RVR 07			
S-ILS 35C	CAT IIIb RVR 06			
S-ILS 35C	CAT IIIc NA			

CATEGORY II & III ILS - SPECIAL AIRCREW & AIRCRAFT CERTIFICATION REQUIRED



HIRL all Rwys
REIL Rwys 13L and 31L
TDZ/CL all Rwys except 13L and 31L

SC-2, 16 JUL 2020 to 13 AUG 2020

SC-2, 16 JUL 2020 to 13 AUG 2020