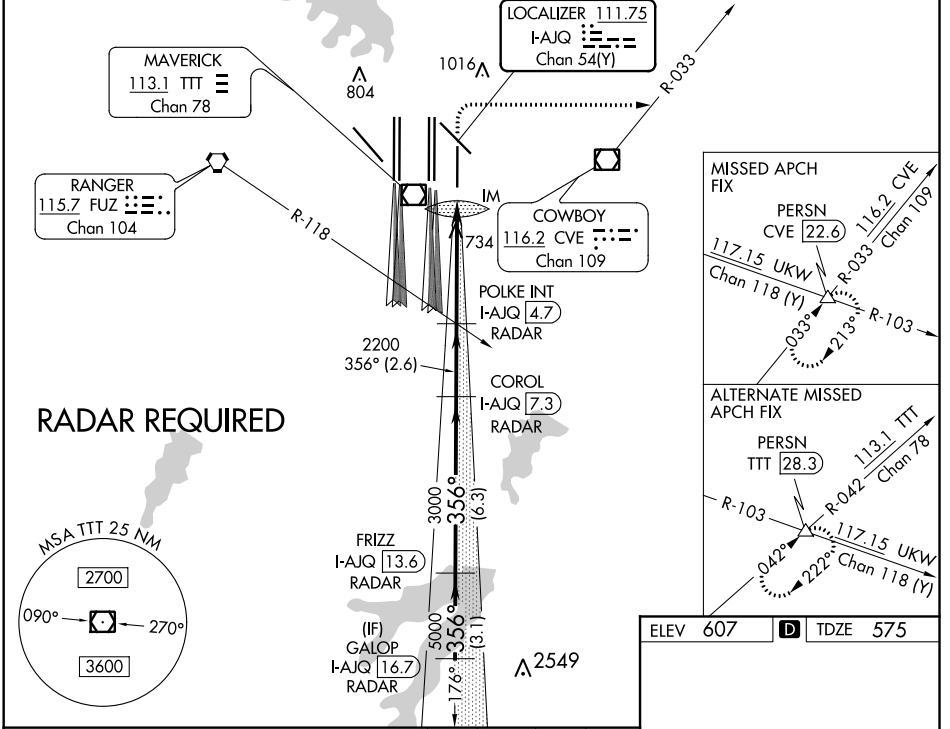


LOC/DME I-AJQ 111.75 Chan 54(Y)	APP CRS 356°	Rwy Idg TDZE Apt Elev 8500 575 607
--	------------------------	--

ILS RWY 35R (CAT II & III)

DALLAS-FORT WORTH INTL (DFW)

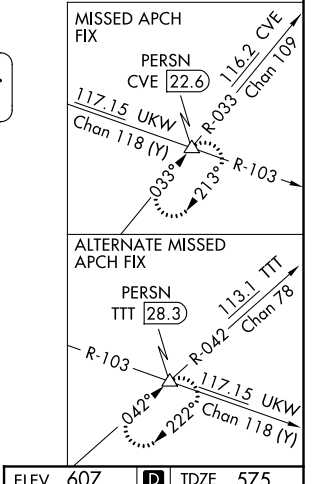
D-ATIS ARR 123.775 DEP 135.925		REGIONAL APP CON 119.4	DFW TOWER 126.55 127.5 EAST 124.15 134.9 WEST	GND CON 121.65 121.8 EAST 121.85 WEST	CLNC DEL 128.25	CPDLC
--	--	----------------------------------	---	---	---------------------------	-------



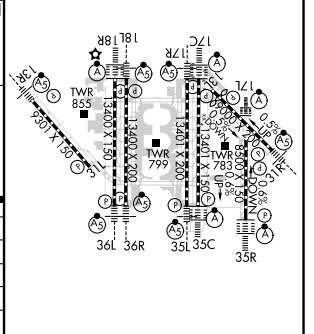
GALOP I-AJQ 16.7 RADAR	FRIZZ I-AJQ 13.6 RADAR	COROL I-AJQ 7.3 RADAR	POLKE INT I-AJQ 4.7 RADAR	1040 3000 hdg 090° I-AJQ DME ANTENNA IM 671	CVE R-033	PERSN △
5000	356°	5000	3000	2200	2200	2200
GS 3.00°	TCH 58	3000	2200	2200	2200	2200

VGSI and ILS glidepath not coincident (VGSI Angle 3.00/TCH 73).

3.1 NM	6.3 NM	2.6 NM	4.9 NM	1375'
A	B	C	D	
S-ILS 35R	CAT II RA 94/12		100 DA 675	
S-ILS 35R	CAT IIIa		RVR 07	
S-ILS 35R	CAT IIIb		RVR 06	
S-ILS 35R	CAT IIIc		NA	



ELEV 607	D	TDZE 575
----------	---	----------



CATEGORY II & III ILS - SPECIAL AIRCREW & AIRCRAFT CERTIFICATION REQUIRED

HIRL all Rwys
REIL Rwys 13L and 31L
TDZ/CL all Rwys except 13L, and 31L

SC-2, 16 JUL 2020 to 13 AUG 2020

SC-2, 16 JUL 2020 to 13 AUG 2020