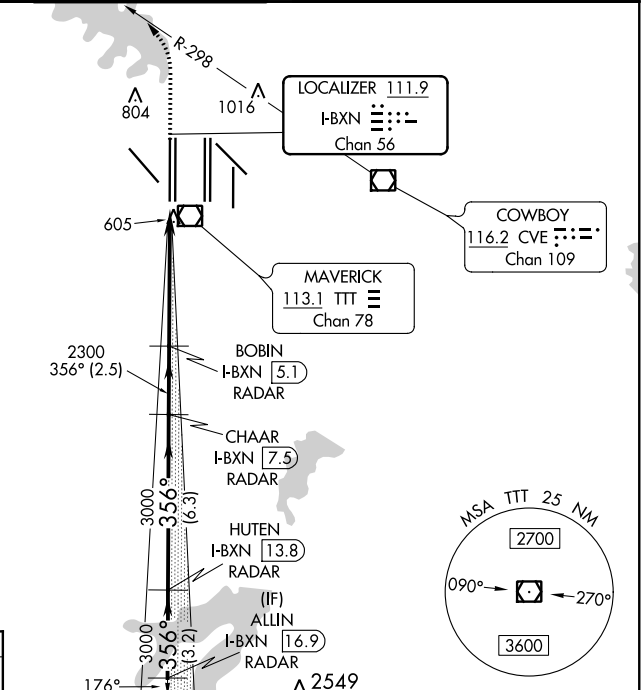
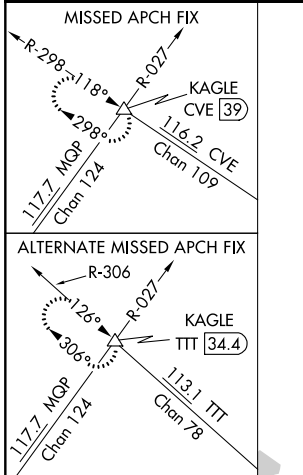


LOC/DME I-BXN <b>111.9</b> Chan <b>56</b>	APP CRS <b>356°</b>	Rwy Idg TDZE <b>588</b> Apt Elev <b>607</b>	<b>13400</b>
---	------------------------	---	--------------

# ILS RWY 36L (SA CAT II)

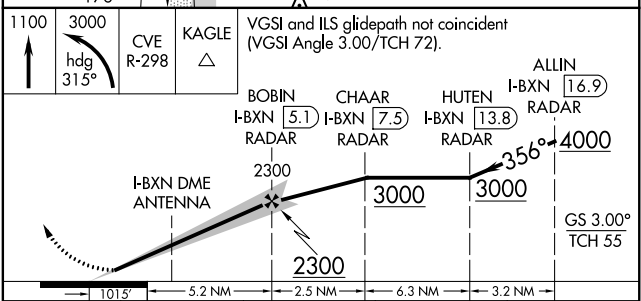
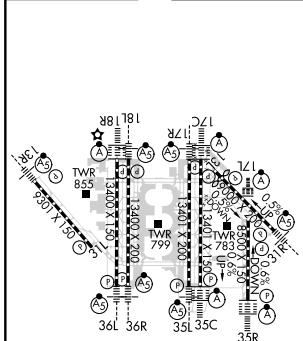
DALLAS-FORT WORTH INTL (DFW)

▼ DME or RADAR required. Reduced Lighting: Requires specific OPSPEC, MSPEC, or LOA approval and use of autoland or HUD to touchdown.	MALSR 	MISSED APPROACH: Climb to 1100 then climbing left turn to 3000 on heading 315° and CVE VOR/DME R-298 to KAGLE INT/ CVE VOR/DME 39 DME and hold.		
		D-ATIS ARR <b>123.775</b> DEP <b>135.925</b>	REGIONAL APP CON <b>118.425</b>	DFW TOWER <b>126.55 127.5 EAST</b> <b>124.15 134.9 WEST</b>
			CLNC DEL <b>128.25</b>	CPDLC



**RADAR REQUIRED**

ELEV 607	<b>D</b>	TDZE 588 36L
----------	----------	--------------



CATEGORY	A	B	C	D
S-ILS 36L	RA 107/12 100 DA 688			

**SA CATEGORY II - ILS SPECIAL AIRCREW & AIRCRAFT CERTIFICATION REQUIRED**

SC-2, 16 JUL 2020 to 13 AUG 2020

SC-2, 16 JUL 2020 to 13 AUG 2020