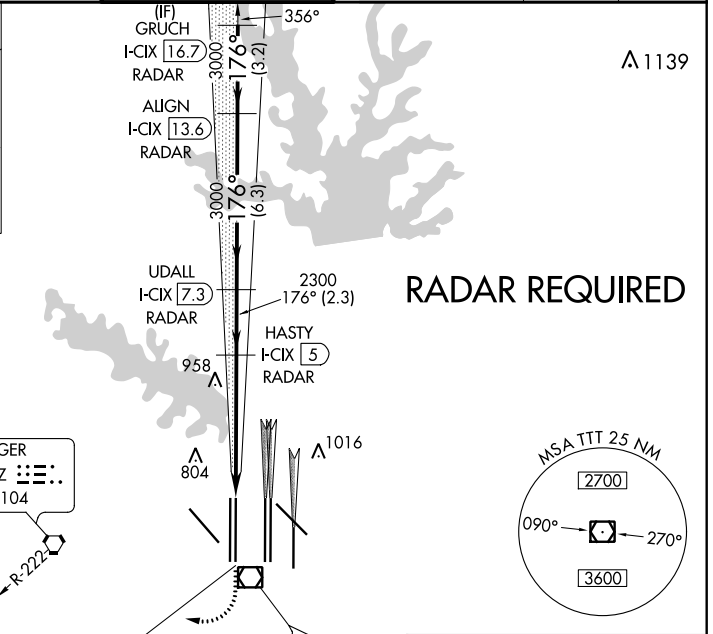
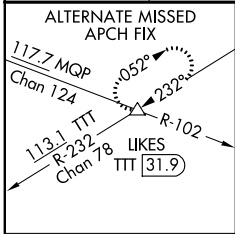


LOC/DME I-CIX <b>110.55</b> Chan <b>42 (Y)</b>	APP CRS <b>176°</b>	Rwy 18L Idg <b>13400</b> TDZE <b>602</b> Apt Elev <b>607</b>	Rwy 18R Idg <b>13400</b> TDZE <b>607</b> Apt Elev <b>607</b>
--	------------------------	--	--

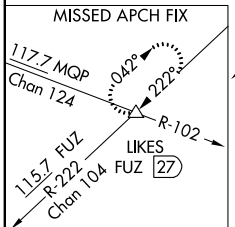
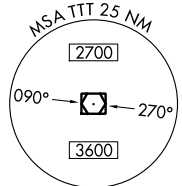
# ILS or LOC RWY 18L

DALLAS-FORT WORTH INTL (DFW)

<p>⚠ Simultaneous approach authorized with Rwy 17L/C/R. For inop MALSR/ALSF, increase S-LOC 18L Cat C/D and sidestep 18R Cat C visibility to 1 1/4 mile. Inop table does not apply to sidestep 18R Cats A and B. DME or RADAR required.</p>		Rwy 18L MALSR 	Rwy 18R ALSF-2 	MISSED APPROACH: Climb to 1100, then climbing right turn to 3000 on heading 245° and FUZ VORTAC R-222 to LIKES INT/FUZ 27 DME and hold.		
D-ATIS ARR <b>123.775</b> DEP <b>135.925</b>	REGIONAL APP CON <b>118.425</b>	DFW TOWER <b>126.55 127.5</b> EAST <b>124.15 134.9</b> WEST		GND CON <b>121.65 121.8</b> EAST <b>121.85</b> WEST	CLNC DEL <b>128.25</b>	CPDLC



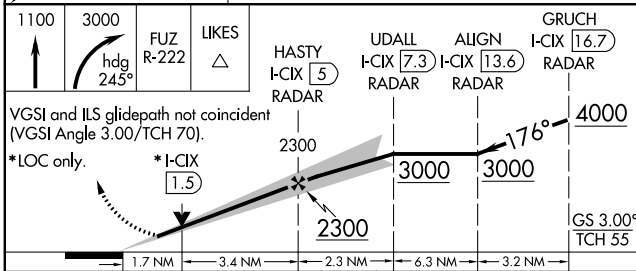
**RADAR REQUIRED**



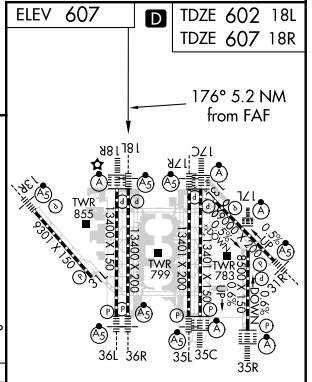
RANGER  
115.7 FUZ  
Chan 104

LOCALIZER 110.55  
I-CIX  
Chan 42 (Y)

MAVERICK  
113.1 TTT  
Chan 78



CATEGORY	A	B	C	D
S-ILS 18L	802/18			
S-LOC 18L	1220/24	618 (700-1/2)	1220-1 3/8	618 (700-1 3/8)
SIDESTEP 18R	1220/50	613 (700-1)	1220-1 3/8	1220-1 1/2
			613 (700-1 3/8)	613 (700-1 1/2)



HIRL all Rwys					
REIL Rwys 13L and 31L					
TDZ/CL all Rwys except 13L and 31L					
FAF to MAP 5.2 NM					
Knots	60	90	120	150	180
Min:Sec	5:12	3:28	2:36	2:05	1:44