

LOC/DME I-VYIN 111.9 Chan 56	APP CRS 176°	Rwy Idg TDZE Apt Elev	18R 13400 607 607	18L 13400 602 607
--	------------------------	-----------------------------	---	---

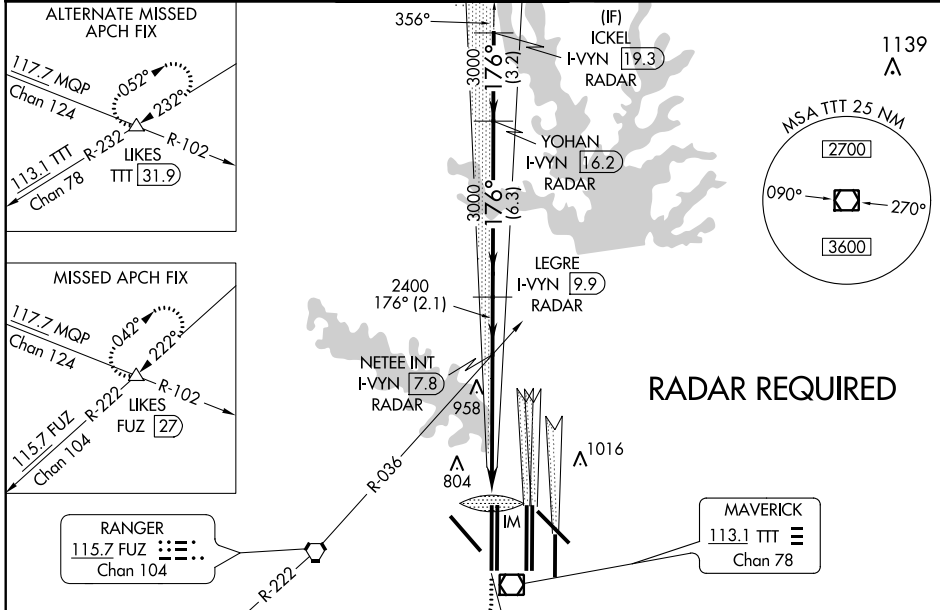
ILS or LOC RWY 18R

DALLAS-FORT WORTH INTL (DFW)

⚠ Inop table does not apply to Sidestep 18L Cats A and B. DME or RADAR required. Simultaneous approach authorized with Rwy 17 L/C/R. For inop ALSF/MALSR, increase S-LOC 18R Cat C/D and Sidestep 18L Cat C visibility to 1/4 mile.

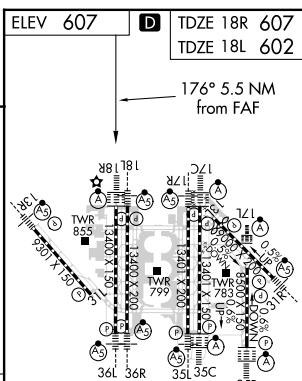
Rwy 18R ALSF-2 (A)	Rwy 18L MALSR (AS)	MISSED APPROACH: Climb to 1100 then climbing right turn to 3000 on heading 250° and FUZ VORTAC R-222 to LIKES INT/FUZ VORTAC 27 DME and hold.
------------------------------	------------------------------	---

D-ATIS ARR 123.775 DEP 135.925	REGIONAL APP CON 118.425	DFW TOWER 126.55 127.5 EAST 124.15 134.9 WEST	GND CON 121.65 121.8 EAST 121.85 WEST	CLNC DEL 128.25	CPDLC
--	------------------------------------	---	---	---------------------------	-------



RADAR REQUIRED

1100	3000	FUZ R-222	LIKES	VGSI and ILS glidepath not coincident (VGSI Angle 3.00/TCH 74).	ICKEL I-VYIN [19.3] RADAR
↑	hdg 250°		△	LEGRE I-VYIN [9.9] RADAR	YOHAN I-VYIN [16.2] RADAR
*LOC only					
I-VYIN [2.4]	*I-VYIN [4.1]	NETEE INT I-VYIN [7.8] RADAR	2400	3000	3000
0.1	1.6 NM	3.8 NM	2.1 NM	6.3 NM	3.2 NM



CATEGORY	A	B	C	D	
S-ILS 18R	807/18		200 (200-1/2)		
S-LOC 18R	1220/24	613 (700-1/2)	1220-1 3/8	613 (700-1 3/8)	
SIDESTEP 18L	1220/50	618 (700-1)	1220-1 3/8	1220-1 1/2	
			618 (700-1 3/8)	618 (700-1 1/2)	
HIRL all Rwys					
REIL Rwys 13L and 31L					
TDZ/CL all Rwys except 13L and 31L					
FAF to MAP 5.5 NM					
Knots	60	90	120	150	180
Min:Sec	5:30	3:40	2:45	2:12	1:50

SC-2, 16 JUL 2020 to 13 AUG 2020

SC-2, 16 JUL 2020 to 13 AUG 2020