

LOC/DME I-PKQ 110.3 Chan 40	APP CRS 356°	Rwy 35C Idg 13401 TDZE 563 Apt Elev 607	Rwy 35L Idg 13401 TDZE 564 Apt Elev 607
--	------------------------	--	--

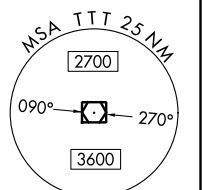
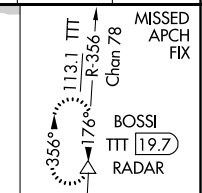
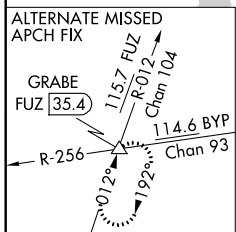
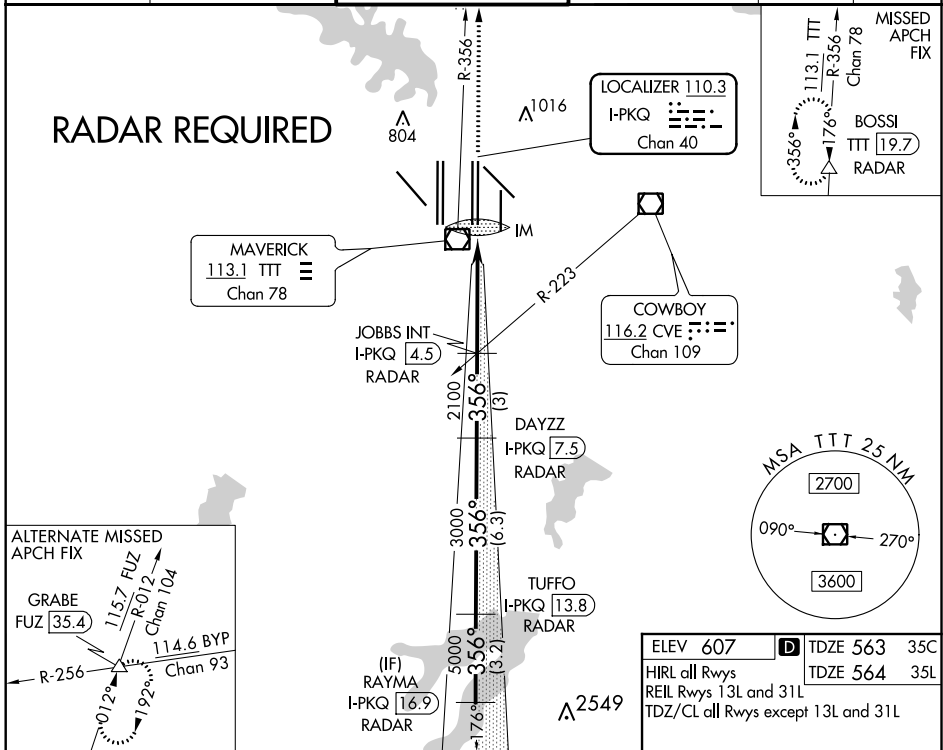
ILS or LOC RWY 35C

DALLAS-FORT WORTH INTL (DFW)

▽ Inoperative table does not apply to Sidestep Rwy 35L Cats A and B. DME or RADAR required. Simultaneous approach authorized with Rwy 35R, Rwy 36L/R.

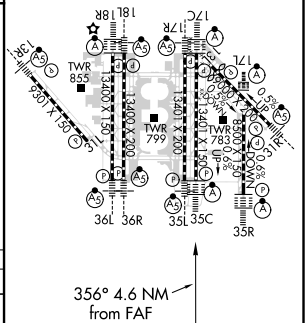
Rwy 35C ALSF-2 **(A)** Rwy 35L MALSR **(AS)** MISSED APPROACH: Climb to 3000 on TTT VOR/DME R-356 to BOSSI/TTT 19.7 DME/RADAR and hold.

D-ATIS ARR 123.775 DEP 135.925	REGIONAL APP CON 127.075	DFW TOWER 126.55 127.5 EAST 124.15 134.9 WEST	GND CON 121.65 121.8 EAST 121.85 WEST	CLNC DEL 128.25	CPDLC
--	------------------------------------	---	---	---------------------------	-------



3000 ↑ TTT R-356 *LOC only	BOSSI △	VGSI and ILS glidepath not coincident (VGSI Angle 3.00/TCH 76).	RAYMA I-PKQ 16.9 RADAR	TUFFO I-PKQ 13.8 RADAR	DAYZZ I-PKQ 7.5 RADAR	JOBBS INT I-PKQ 4.5 RADAR	IM
6000	5000	3000	2100	2100	2100	2100	2100
GS 3.00° TCH 59	6.3 NM	3.2 NM	3 NM	3.5 NM	0.1 NM	0.1 NM	0.1 NM
CATEGORY	A	B	C	D			
S-ILS 35C	763/18		200 (200-½)				
S-LOC 35C	1000/24	437 (400-½)	1000/40	437 (400-¾)			
SIDESTEP 35L	1000/55		436 (400-1)		1000-1½	436 (400-1½)	

ELEV 607	D TDZE 563 35C
HIRL all Rwys	TDZE 564 35L
REIL Rwys 13L and 31L	
TDZ/CL all Rwys except 13L and 31L	
FAF to MAP 4.6 NM	
Knots	60 90 120 150 180
Min:Sec	4:36 3:04 2:18 1:50 1:32



SC-2, 16 JUL 2020 to 13 AUG 2020

SC-2, 16 JUL 2020 to 13 AUG 2020