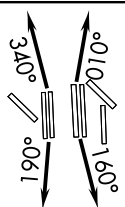


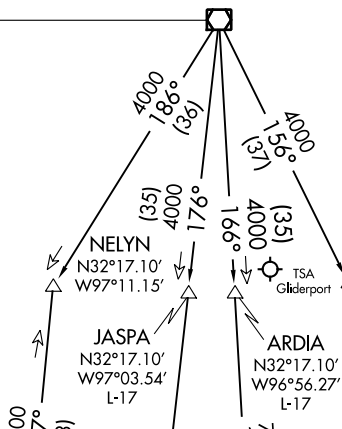
# JOE POOL ONE DEPARTURE

**TOP ALTITUDE:**  
**RWY 13L/R, 17L/C/R, 18L/R,**  
**35L/C/R, 36L/R: 10000**  
**RWY 31L/R: 5000**

D-ATIS DEP 135.925  
 CLNC DEL 128.25  
 CPDLC  
 GND CON  
 (EAST) 121.65 121.8  
 (WEST) 121.85  
 DFW TOWER  
 (EAST) 126.55 127.5  
 (WEST) 124.15 134.9  
 REGIONAL DEP CON  
 125.125 353.95  
 (Rwy 17R/C)  
 125.125 353.95  
 (Rwy 18L/R)  
 126.475 363.15  
 (Rwy 36R/L)  
 118.55 290.35  
 (Rwy 35L/C)



**MAVERICK**  
 113.1 TTT  
 Chan 78  
 N32°52.15'  
 W97°02.43'



**WACO**  
 115.3 ACT  
 Chan 100  
 N31°39.74'  
 W97°16.14'  
 L-19, H-6

**WINDU**  
 N31°31.83'  
 W97°04.95'  
 L-19, H-6

**COLLEGE STATION**  
 113.3 CLL  
 Chan 80  
 N30°36.30'  
 W96°25.24'  
 L-19-21, H-7

**LEONA**  
 110.8 LOA  
 Chan 45

**HOARY**  
 N30°34.63'  
 W97°46.52'  
 L-19-21, H-7

**CENTEX**  
 112.8 CWK  
 Chan 75

**SAN ANTONIO**  
 116.8 SAT  
 Chan 115  
 N29°38.64'-W98°27.68'  
 L-19, H-7

**NAVASOTA**  
 115.9 TNV  
 Chan 106

NOTE: RADAR and DME required.  
 NOTE: Props: Expect KEENE or TRI-GATE departure.  
 NOTE: Maintain 240K until leaving 5000.

**TAKEOFF MINIMUMS**  
 Rws 13L/R, 17L/C/R, 18L/R, 31L/R,  
 35L/C, 36L/R: Standard.  
 Rwy 35R: Standard with a minimum climb  
 of 240' per NM to 1200.

(NARRATIVE ON FOLLOWING PAGE)

NOTE: Chart not to scale.

SC-2, 16 JUL 2020 to 13 AUG 2020

SC-2, 16 JUL 2020 to 13 AUG 2020

# JOE POOL ONE DEPARTURE