

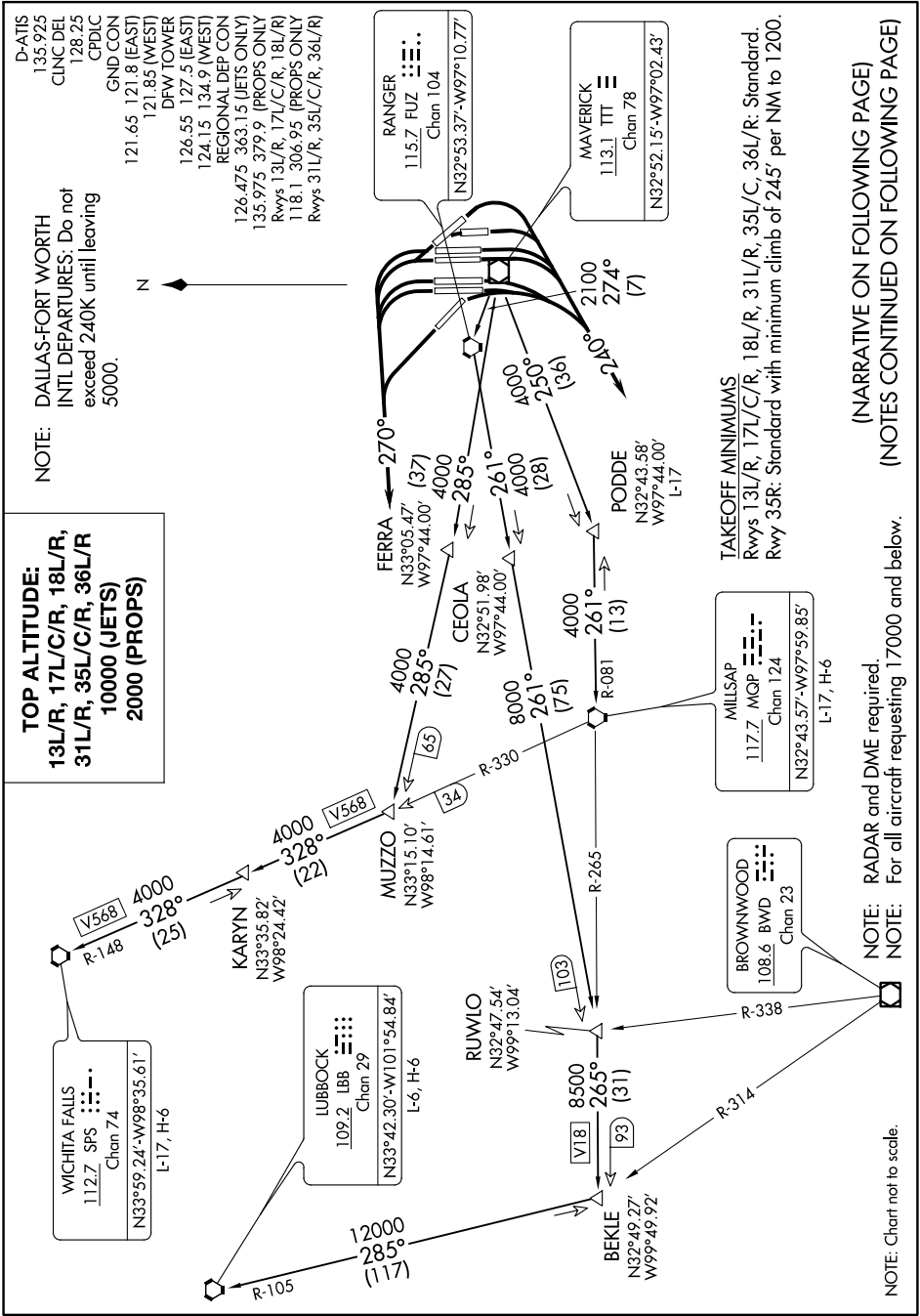
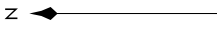
KINGDOM SEVEN DEPARTURE

SC-2, 16 JUL 2020 to 13 AUG 2020

TOP ALTITUDE:
13L/R, 17L/C/R, 18L/R,
31L/R, 35L/C/R, 36L/R
10000 (JETS)
2000 (PROPS)

NOTE: DALLAS-FORT WORTH INTL DEPARTURES: Do not exceed 240K until leaving 5000.

D-ATIS
135.925
CINC DEL
128.25
CPD/C
GND CON
121.65 121.8 (EAST)
121.85 (WEST)
DFW TOWER
126.55 127.5 (EAST)
124.15 134.9 (WEST)
REGIONAL DEP CON
126.475 363.15 (JETS ONLY)
126.475 379.9 (PROPS ONLY)
Rwys 13L/R, 17L/C/R, 18L/R
118.1 306.95 (PROPS ONLY)
Rwys 31L/R, 35L/C/R, 36L/R



TAKEOFF MINIMUMS
 Rwys 13L/R, 17L/C/R, 18L/R, 31L/R, 35L/C, 36L/R: Standard.
 Rwy 35R: Standard with minimum climb of 245' per NM to 1200.

(NARRATIVE ON FOLLOWING PAGE)
 (NOTES CONTINUED ON FOLLOWING PAGE)

NOTE: RADAR and DME required.
NOTE: For all aircraft requesting 17000 and below.

NOTE: Chart not to scale.

KINGDOM SEVEN DEPARTURE

SC-2, 16 JUL 2020 to 13 AUG 2020