

# LOWGN EIGHT DEPARTURE (RNAV)

DALLAS-FORT WORTH, TEXAS

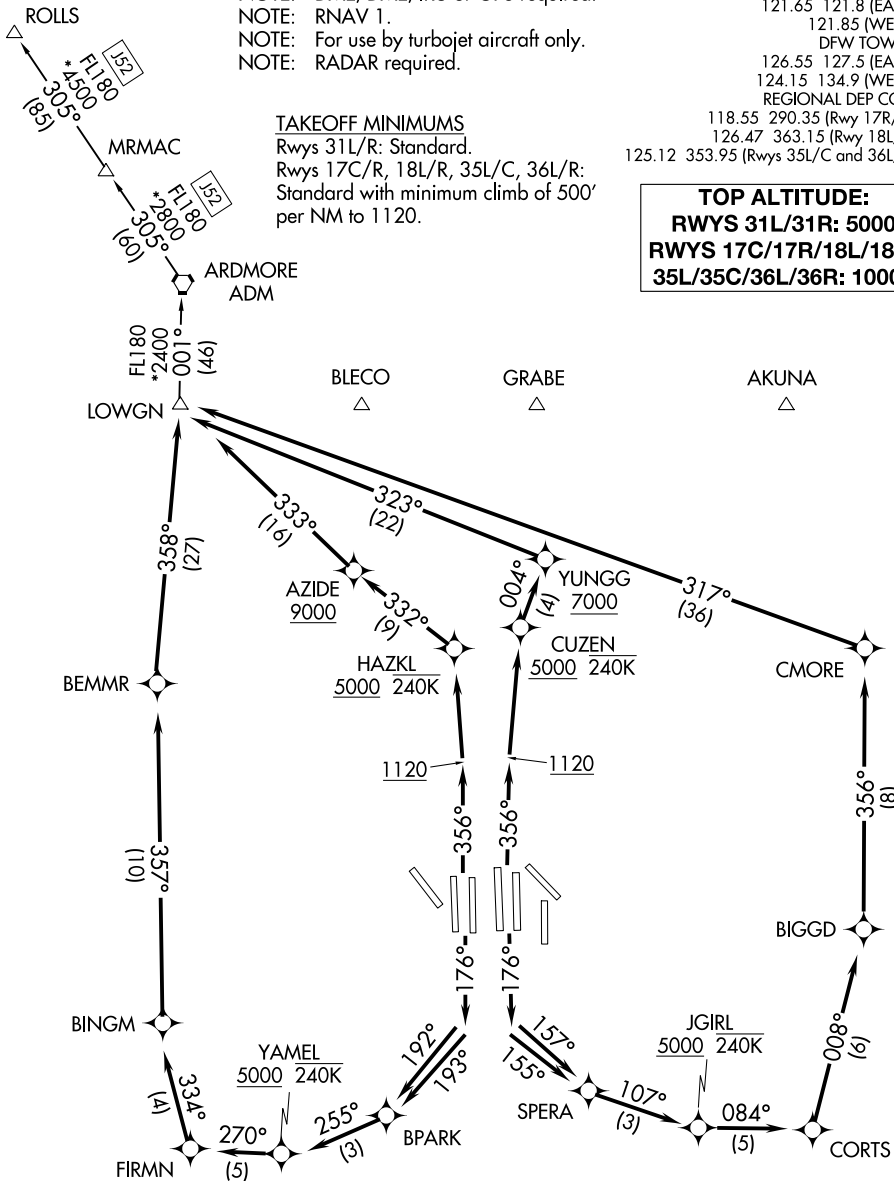
- NOTE: ROLLS TRANSITION: For all aircraft proceeding northwest bound on J52.
- NOTE: DME/DME/IRU or GPS required.
- NOTE: RNAV 1.
- NOTE: For use by turbojet aircraft only.
- NOTE: RADAR required.

- D-ATIS DEP 135.925
- CLNC DEL 128.25
- CPDLC
- GND CON
- 121.65 121.8 (EAST)
- 121.85 (WEST)
- DFW TOWER
- 126.55 127.5 (EAST)
- 124.15 134.9 (WEST)
- REGIONAL DEP CON
- 118.55 290.35 (Rwy 17R/C)
- 126.47 363.15 (Rwy 18L/R)
- 125.12 353.95 (Rwys 35L/C and 36L/R)

### TAKEOFF MINIMUMS

Rwys 31L/R: Standard.  
 Rwys 17C/R, 18L/R, 35L/C, 36L/R:  
 Standard with minimum climb of 500' per NM to 1120.

**TOP ALTITUDE:**  
**RWYS 31L/31R: 5000**  
**RWYS 17C/17R/18L/18R/  
 35L/35C/36L/36R: 10000**



NOTE: Chart not to scale.

(NARRATIVE ON FOLLOWING PAGE)

# LOWGN EIGHT DEPARTURE (RNAV)

(LOWGN8.LOWGN) 29MAR18

DALLAS-FORT WORTH, TEXAS  
DALLAS-FORT WORTH INTL (DFW)

SC-2, 16 JUL 2020 to 13 AUG 2020

SC-2, 16 JUL 2020 to 13 AUG 2020