

WAAS CH <b>86807</b> <b>W18A</b>	APP CRS <b>176°</b>	Rwy Idg <b>13400</b> TDZE <b>602</b> Apt Elev <b>607</b>
--	------------------------	--

# RNAV (GPS) RWY 18L

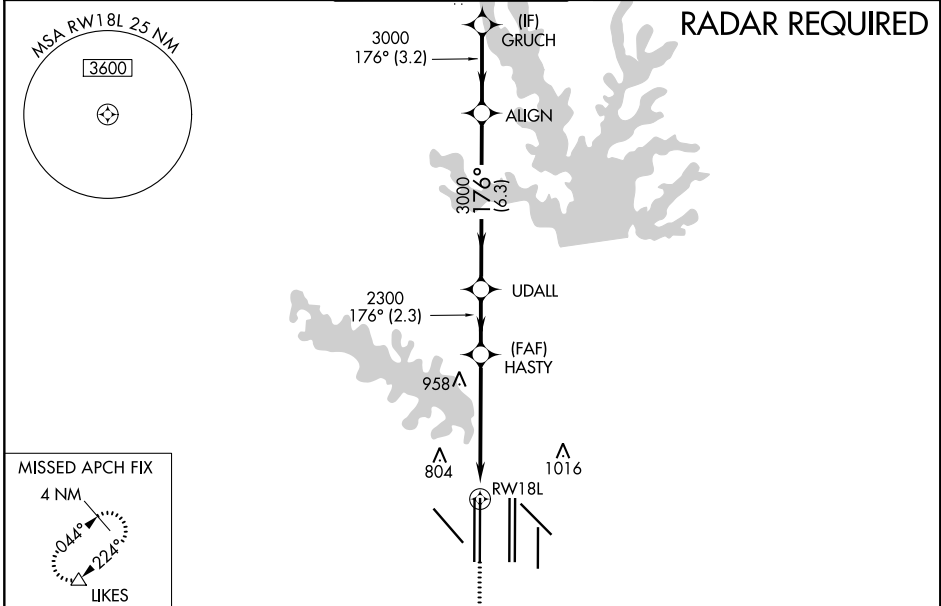
DALLAS-FORT WORTH INTL (DFW)

**▽** For uncompensated Baro-VNAV systems, LNAV/VNAV NA Below -4°C (25°F) or above 54°C (130°F). For inop MALS, increase LNAV Cats C and D visibility to 1¾. Simultaneous approach authorized with Rwy 17L/C/R. DME/DME RNP-0.3 NA. LNAV procedure NA during simultaneous operations. Use of FD or AP providing RNAV track guidance required during simultaneous operations.

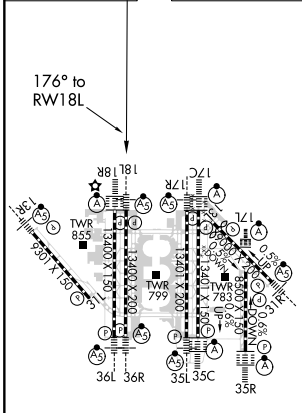


**MISSED APPROACH:** Climb to 1100, then climbing right turn to 3000 direct LIKES and hold.

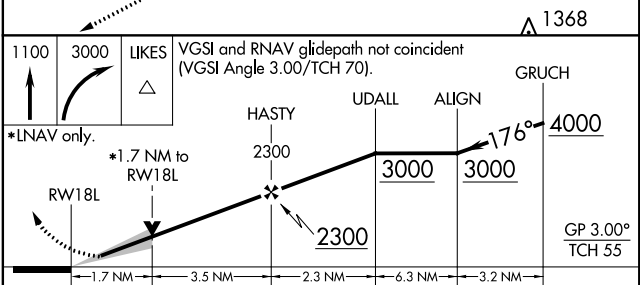
D-ATIS ARR <b>123.775</b> DEP <b>135.925</b>	REGIONAL APP CON <b>119.4</b>	DFW TOWER <b>126.55 127.5</b> EAST <b>124.15 134.9</b> WEST	GND CON <b>121.65 121.8</b> EAST <b>121.85</b> WEST	CLNC DEL <b>128.25</b>	CPDLC
--	----------------------------------	---	---	---------------------------	-------



ELEV <b>607</b>	<b>D</b>	TDZE <b>602</b>
-----------------	----------	-----------------



HIRL all Rwys  
REIL Rwy 13L and 31L  
TDZ/CL all Rwy except 13L and 31L



CATEGORY	A	B	C	D
LPV DA		802/18	200 (200-½)	
LNAV/VNAV DA		980/40	378 (400-¾)	
LNAV MDA	1220/24	618 (700-½)	1220-1¾	618 (700-1¾)

SC-2, 16 JUL 2020 to 13 AUG 2020

SC-2, 16 JUL 2020 to 13 AUG 2020