

|  |                        |  |
|--|------------------------|--|
| WAAS<br>CH <b>87005</b><br><b>W36A</b> | APP CRS<br><b>356°</b> | Rwy Idg <b>13400</b><br>TDZE <b>581</b><br>Apt Elev <b>607</b> |
|--|------------------------|--|

# RNAV (GPS) RWY 36R

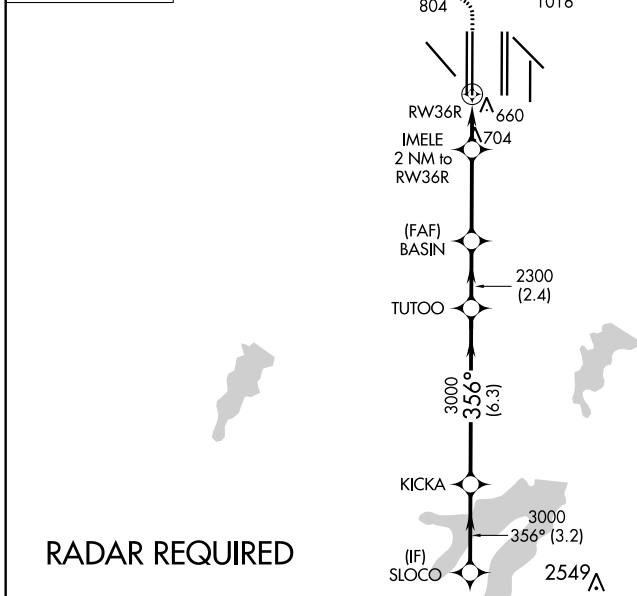
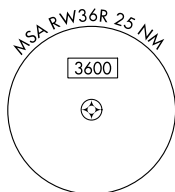
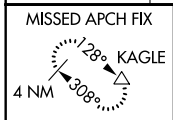
DALLAS-FORT WORTH INTL (DFW)

**▼** For uncompensated Baro-VNAV systems, LNAV/VNAV NA below -4°C (25°F) or above 54°C (130°F). For inop MALSRS, increase LNAV Cats C/D visibility to RVR 5500. Simultaneous approach authorized with Rwy 35L/C/R. DME/DME RNP-0.3 NA. LNAV procedure NA during simultaneous operations. Use of FD or AP providing RNAV track guidance required during simultaneous operations.



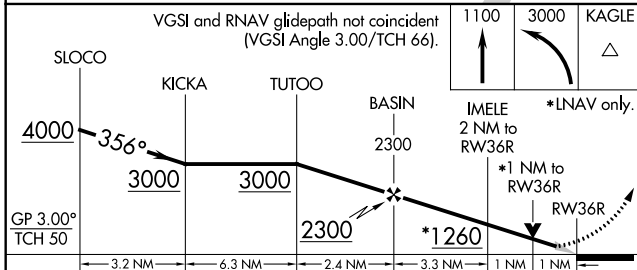
**MISSED APPROACH:** Climb to 1100 then climbing left turn to 3000 direct KAGLE and hold.

|  |                                    |   |   |                           |       |
|--|------------------------------------|---|---|---------------------------|-------|
| D-ATIS<br>ARR <b>123.775</b><br>DEP <b>135.925</b> | REGIONAL APP CON<br><b>118.425</b> | DFW TOWER<br><b>126.55 127.5</b> EAST<br><b>124.15 134.9</b> WEST | GND CON<br><b>121.65 121.8</b> EAST<br><b>121.85</b> WEST | CLNC DEL<br><b>128.25</b> | CPDLC |
|--|------------------------------------|---|---|---------------------------|-------|



SC-2, 16 JUL 2020 to 13 AUG 2020

SC-2, 16 JUL 2020 to 13 AUG 2020



|          |                   |
|----------|-------------------|
| ELEV 607 | <b>D</b> TDZE 581 |
|----------|-------------------|

356° to RW36R

HIRL all Rwys  
REIL Rwys 13L and 31L  
TDZ/CL all Rwys except 13L and 31L

| CATEGORY     | A      | B           | C           | D           |
|--------------|--------|-------------|-------------|-------------|
| LPV DA       |        | 781/18      | 200 (200-½) |             |
| LNAV/VNAV DA |        | 941/40      | 360 (400-¾) |             |
| LNAV MDA     | 960/24 | 379 (400-½) | 960/35      | 379 (400-¾) |