

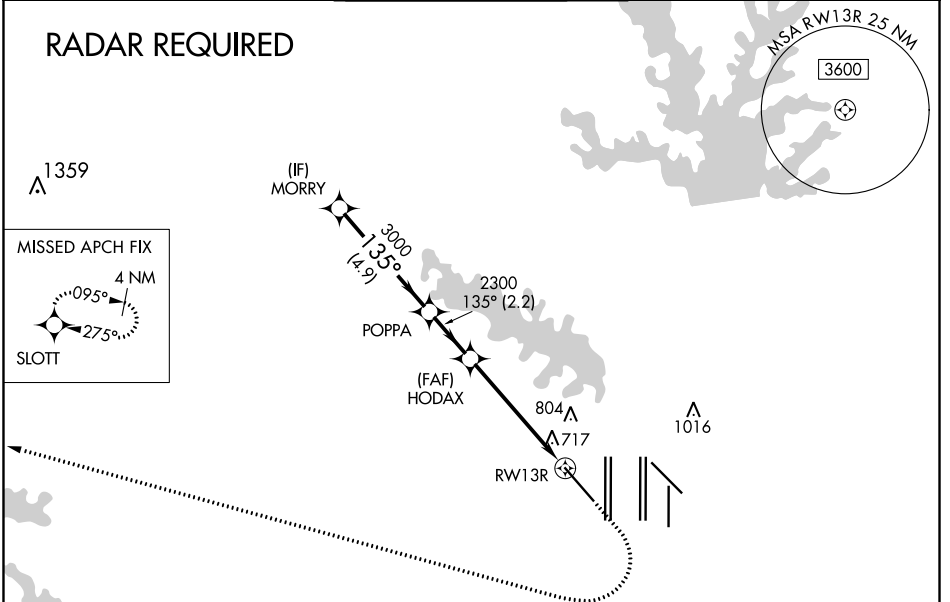
APP CRS <b>135°</b>	Rwy Idg <b>9301</b>
	TDZE <b>591</b>
	Apt Elev <b>607</b>

# RNAV (RNP) Z RWY 13R

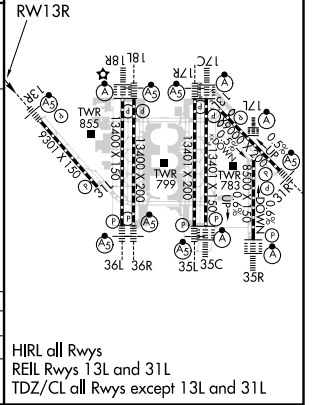
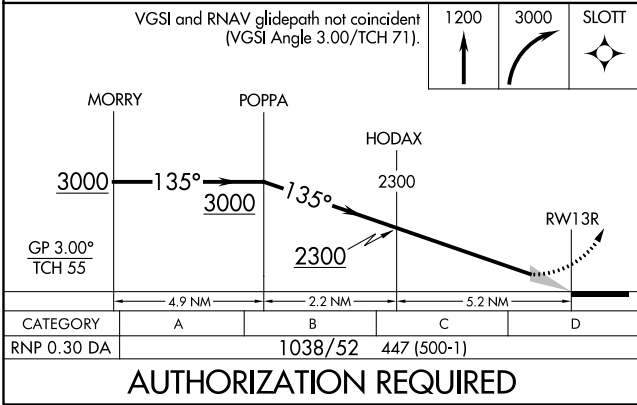
DALLAS-FORT WORTH INTL (DFW)

<p>▽ For uncompensated Baro-VNAV systems, procedure NA below -4°C (25°F) or above 54°C (130°F). For inop MALSRS, increase RNP 0.30 all Cats visibility to 1½ mile. GPS Required.</p>	<p>MALSRS</p>	<p>MISSED APPROACH: Climb to 1200 then climbing right turn to 3000 direct SLOTT and hold.</p>

D-ATIS ARR <b>123.775</b> DEP <b>135.925</b>	REGIONAL APP CON <b>118.1 133.15</b>	DFW TOWER <b>126.55 127.5 EAST</b> <b>124.15 134.9 WEST</b>	GND CON <b>121.65 121.8 EAST</b> <b>121.85 WEST</b>	CLNC DEL <b>128.25</b>	CPDLC
--	---	---	---	---------------------------	-------



ELEV 607	D	TDZE 591
----------	---	----------



DALLAS-FORT WORTH, TEXAS

Andt 1A 18SEP14

32°54'N-97°02'W

DALLAS-FORT WORTH INTL (DFW)

# RNAV (RNP) Z RWY 13R

HIRL all Rwys  
REIL Rwys 13L and 31L  
TDZ/CL all Rwys except 13L and 31L