

APP CRS 315°	Rwy Idg 9301 TDZE 581 Apt Elev 607
------------------------	---

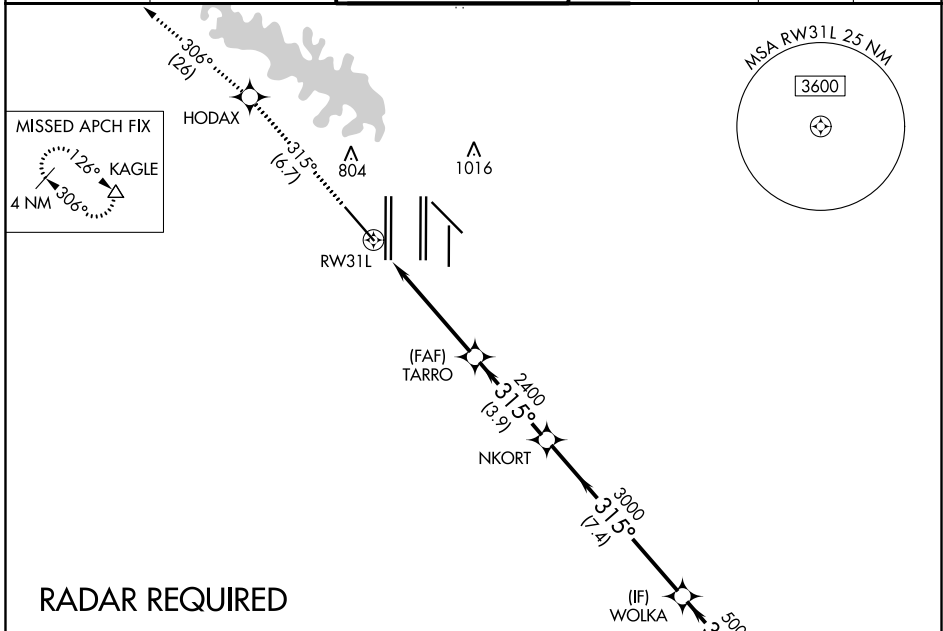
RNAV (RNP) Z RWY 31L

DALLAS-FORT WORTH INTL (DFW)

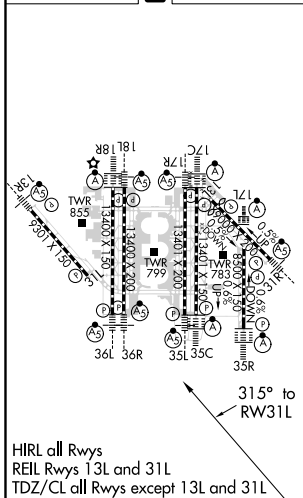
▼ For uncompensated Baro-VNAV systems, procedure NA below -4°C (25°F) or above 54°C (130°F). Simultaneous approach authorized with Rwy 31R. GPS Required. Use of FD or AP providing RNAV track guidance required during simultaneous operations.

MISSED APPROACH: Climb to 3000 on track 315° to HODAX and on track 306° to KAGLE and hold.

D-ATIS ARR 123.775 DEP 135.925	REGIONAL APP CON 133.15 118.1	DFW TOWER 126.55 127.5 EAST 124.15 134.9 WEST	GND CON 121.65 121.8 EAST 121.85 WEST	CLNC DEL 128.25	CPDLC
--	---	---	---	---------------------------	-------



ELEV 607 **D** TDZE 581



3000 HODAX	tr 315°	KAGLE	tr 306°	VGSI and RNAV glidepath not coincident (VGSI Angle 3.13/TCH 72).
RWY 31L		TARRO 2400	3000	315°
5.6 NM		3.9 NM	7.4 NM	4 NM
WOLKA	ZUREK	5000	5000	GP 3.00° TCH 54
CATEGORY	A	B	C	D
RNP 0.30 DA	951/60 370 (400-1¼)			

AUTHORIZATION REQUIRED

SC-2, 16 JUL 2020 to 13 AUG 2020

SC-2, 16 JUL 2020 to 13 AUG 2020