

APP CRS 311°	Rwy Idg 8375
	TDZE 523
	Apt Elev 607

RNAV (RNP) Z RWY 31R

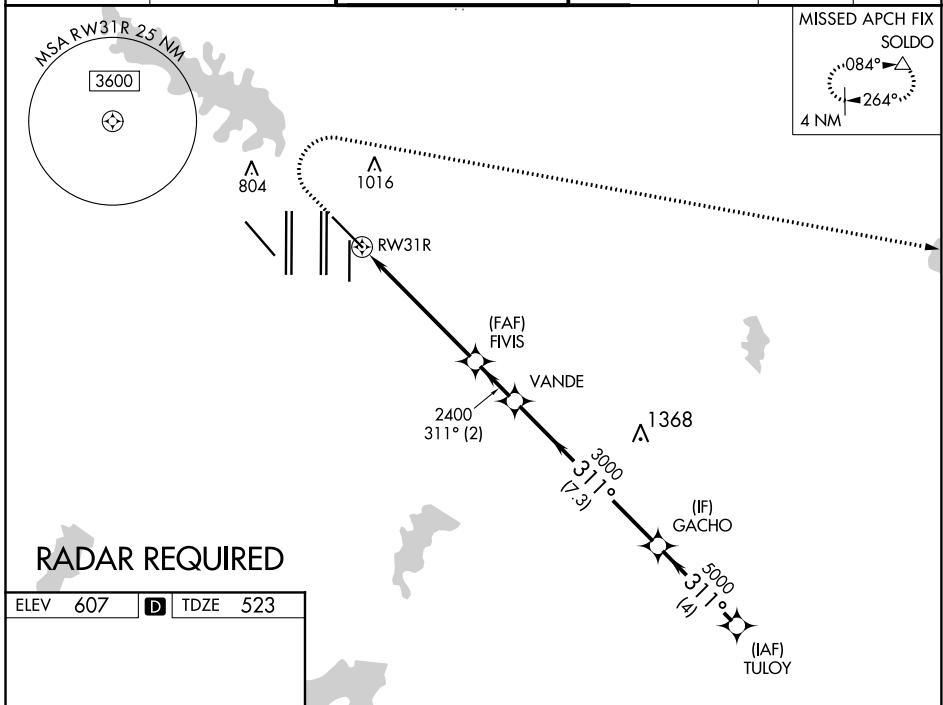
DALLAS-FORT WORTH INTL (DFW)

▼ For uncompensated Baro-VNAV systems, procedure NA below -4°C (25°F) or above 54°C (130°F). For inop MALSR, increase RNP 0.14 all Cats visibility to RVR 5100, RNP 0.23 all Cats visibility to 1/8 mile, RNP 0.30 all Cats visibility to 1/2 mile. Simultaneous approach authorized with Rwy 31L. GPS Required. Use of FD or AP providing RNAV track guidance required during simultaneous operations.



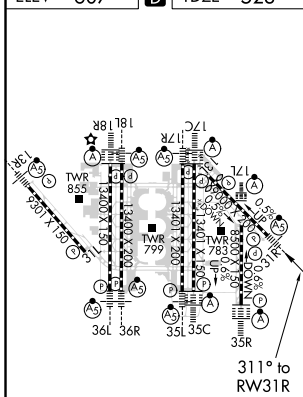
MISSED APPROACH: Climb to 1100 then climbing right turn to 3000 direct SOLDO and hold.

D-ATIS ARR 123.775 DEP 135.925	REGIONAL APP CON 125.2 135.5	DFW TOWER 126.55 127.5 EAST 124.15 134.9 WEST	GND CON 121.65 121.8 EAST 121.85 WEST	CLNC DEL 128.25	CPDLC
--	--	---	---	---------------------------	-------

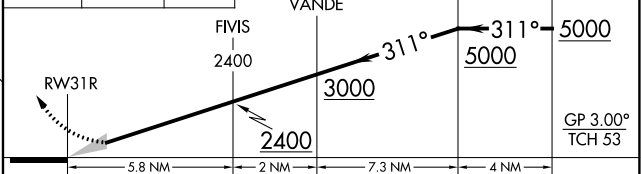


RADAR REQUIRED

ELEV 607	D	TDZE 523
----------	----------	----------



1100	3000	SOLDO	VGSI and RNAV glidepath not coincident (VGSI Angle 3.00/TCH 69).
↑	↷	△	



CATEGORY	A	B	C	D
RNP 0.14 DA		838/27	315 (300-5%)	
RNP 0.23 DA		928/44	405 (400-7%)	
RNP 0.30 DA		987/55	464 (400-1)	

AUTHORIZATION REQUIRED

HIRL all Rwys
REIL Rwys 13L and 31L
TDZ/CL all Rwys except 13L and 31L

SC-2, 16 JUL 2020 to 13 AUG 2020

SC-2, 16 JUL 2020 to 13 AUG 2020