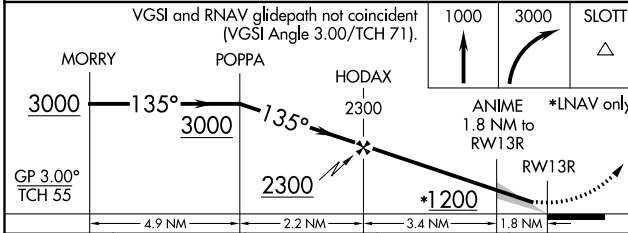
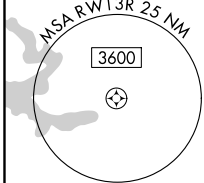
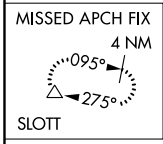
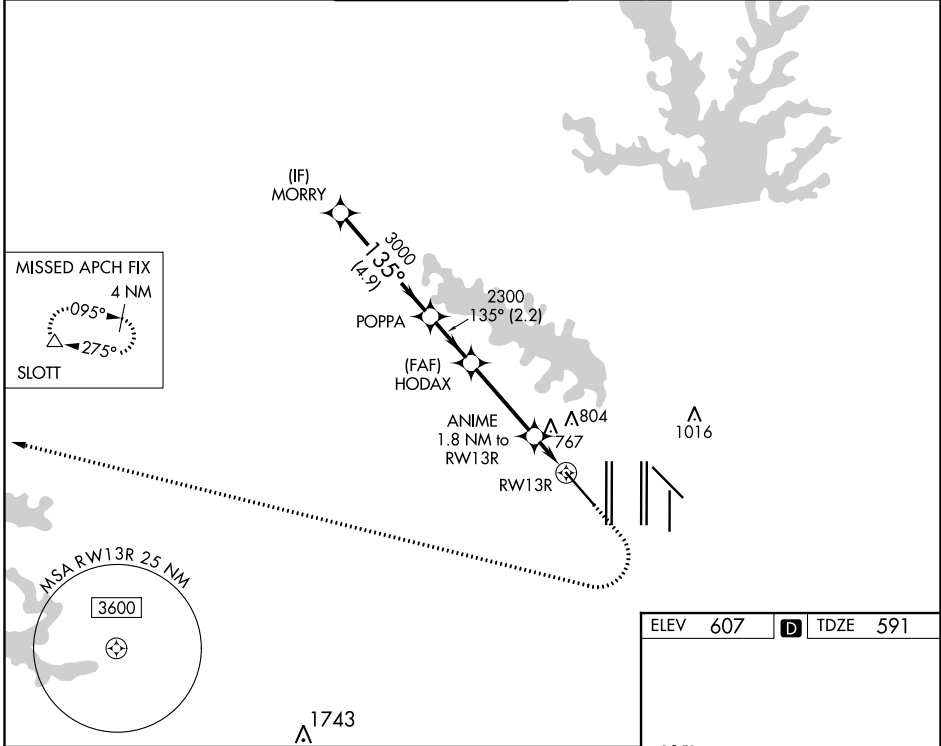


WAAS CH <b>72742</b> <b>W13A</b>	APP CRS <b>135°</b>	Rwy Idg <b>9301</b> TDZE <b>591</b> Apt Elev <b>607</b>
--	------------------------	---

# RNAV (GPS) Y RWY 13R

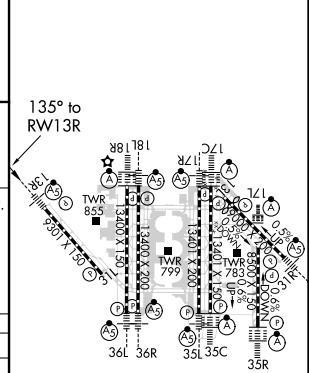
DALLAS-FORT WORTH INTL (DFW)

RNP APCH. ▼ For uncompensated Baro-VNAV systems, LNAV/VNAV NA below -6° C or above 54° C. For inop ALS, increase LNAV/VNAV all Cats visibility to RVR 5500 and LNAV Cat C/D visibility to 1½ SM.		MALSR 	MISSED APPROACH: Climb to 1000 then climbing right turn to 3000 direct SLOTT and hold.		
D-ATIS ARR <b>123.775</b> DEP <b>135.925</b>	REGIONAL APP CON <b>118.1 133.15</b>	DFW TOWER <b>126.55 127.5 EAST</b> <b>124.15 134.9 WEST</b>	GND CON <b>121.65 121.8 EAST</b> <b>121.85 WEST</b>	CLNC DEL <b>128.25</b>	CPDLC



CATEGORY	A	B	C	D
LPV DA		791/18	200 (200-½)	
LNAV/VNAV DA		967/35	376 (400-¾)	
LNAV MDA	1080/24	489 (500-½)	1080/50	489 (500-1)

ELEV 607	D	TDZE 591
----------	---	----------



HIRL all Rwws  
REIL Rwws 13L and 31L  
TDZ/CL all Rwws except 13L and 31L

SC-2, 16 JUL 2020 to 13 AUG 2020

SC-2, 16 JUL 2020 to 13 AUG 2020