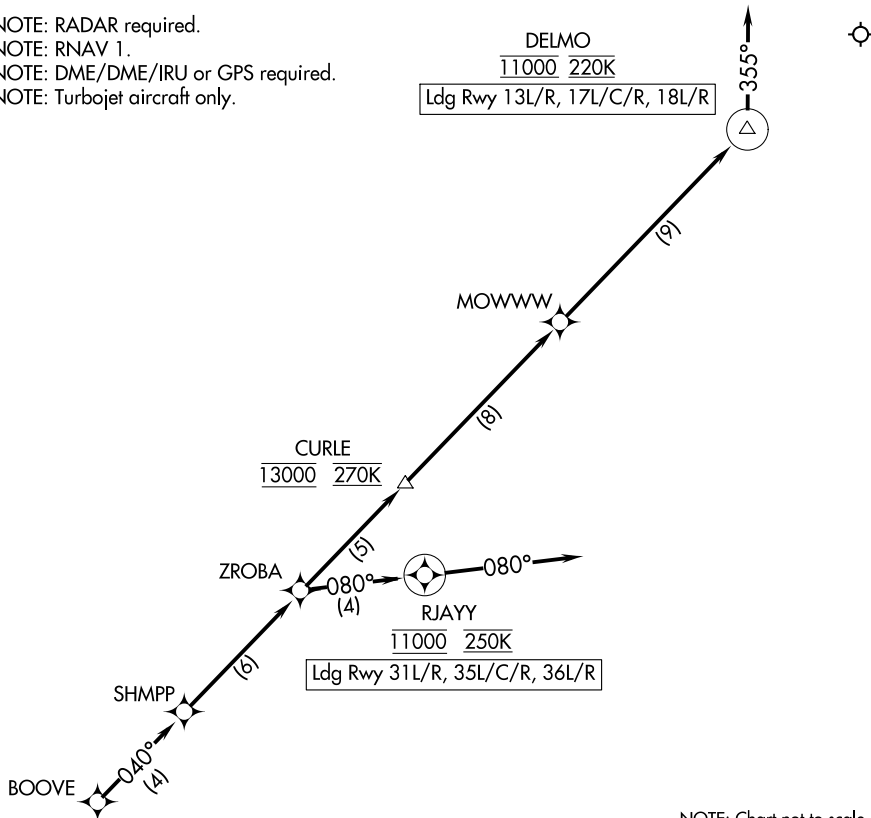


# SHMPP ONE ARRIVAL (RNAV) Arrival Route

D-ATIS ARR  
123.775  
REGIONAL APP CON  
119.875 284.65

NOTE: RADAR required.  
NOTE: RNAV 1.  
NOTE: DME/DME/IRU or GPS required.  
NOTE: Turbojet aircraft only.



SC-2, 16 JUL 2020 to 13 AUG 2020

SC-2, 16 JUL 2020 to 13 AUG 2020

## ARRIVAL ROUTE DESCRIPTION

From BOOVE on track 040° to SHMPP, then on track 040° to ZROBA.

Landing RUNWAYS 13L/R, 17L/C/R, 18L/R: From ZROBA on track 040° to cross CURLE at 13000 and at 270K, then on track 040° to MOWWW, then on track 040° to cross DELMO at 11000 and 220K, then on track 355°. Expect RADAR vectors to final approach course.

Landing Runways 35L/C/R, 36L/R, 31L/R: From ZROBA on track 080° to cross RJAYY at 11000 and at 250K, then on track 080°. Expect RADAR vectors to final approach course.