

(BOOVE.SOCKK3) 17117

SOCKK THREE ARRIVAL (RNAV)

AL-6039 (FAA)

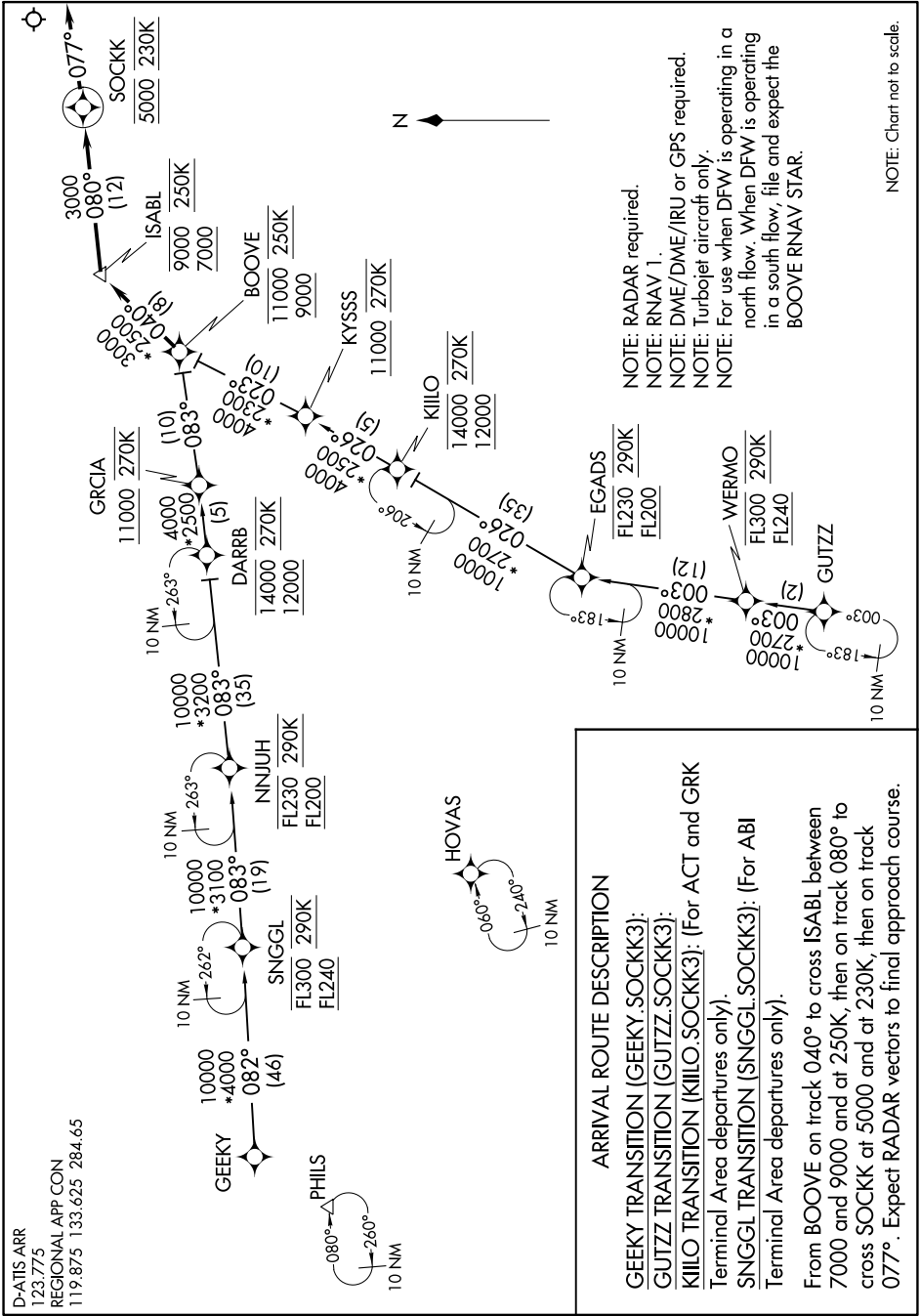
DALLAS-FORT WORTH INTL (DFW)
DALLAS-FORT WORTH, TEXAS

SC-2, 16 JUL 2020 to 13 AUG 2020

D-ATIS.ARR
123.775
REGIONAL APP CON
119.875 133.625 284.65

SOCKK THREE ARRIVAL (RNAV)

(BOOVE.SOCKK3) 26MAY16



NOTE: RADAR required.
 NOTE: RNAV 1.
 NOTE: DME/DME/IRU or GPS required.
 NOTE: Turbojet aircraft only.
 NOTE: For use when DFW is operating in a north flow. When DFW is operating in a south flow, file and expect the BOOVE RNAV STAR.

ARRIVAL ROUTE DESCRIPTION

GEEKY TRANSITION (GEEKY.SOCKK3):
GUTZZ TRANSITION (GUTZZ.SOCKK3):
KILLO TRANSITION (KILLO.SOCKK3): (For ACT and GRK Terminal Area departures only).
SNGGL TRANSITION (SNGGL.SOCKK3): (For ABI Terminal Area departures only).
 From BOOVE on track 040° to cross ISABL between 7000 and 9000 and at 250K, then on track 080° to cross SOCKK at 5000 and at 230K, then on track 077°. Expect RADAR vectors to final approach course.

SC-2, 16 JUL 2020 to 13 AUG 2020

DALLAS-FORT WORTH, TEXAS
DALLAS-FORT WORTH INTL (DFW)