

WAAS CH <b>42818</b> <b>W25A</b>	APP CRS <b>246°</b>	Rwy ldg <b>5003</b> TDZE <b>147</b> Apt Elev <b>147</b>
--	------------------------	---

# RNAV (GPS) RWY 25

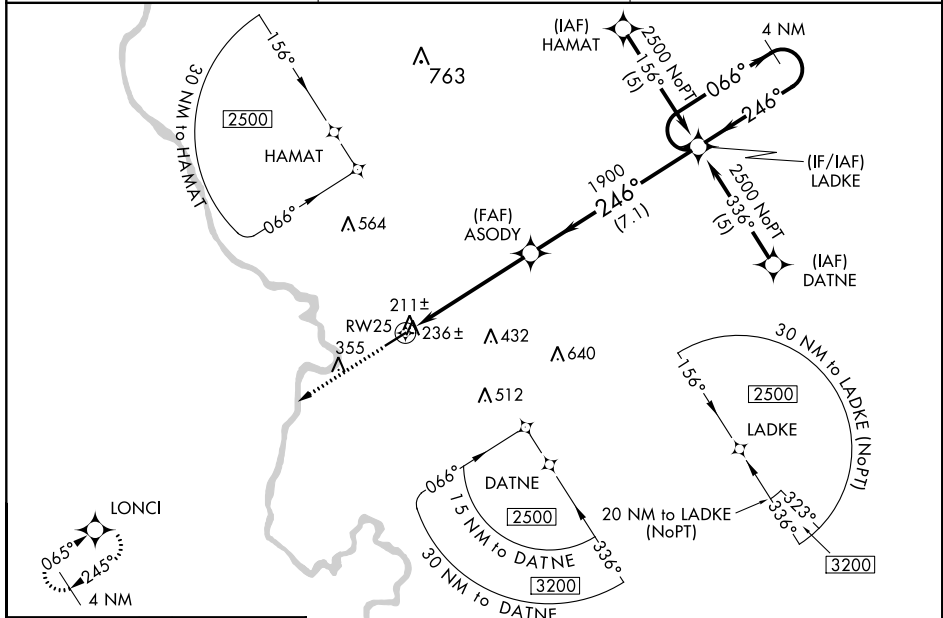
MARLBORO COUNTY JETPORT-H E AVENT FIELD (BBP)

RNP APCH.

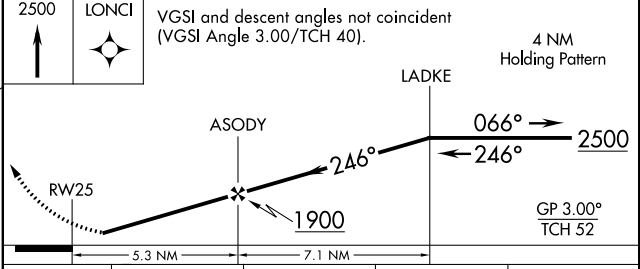
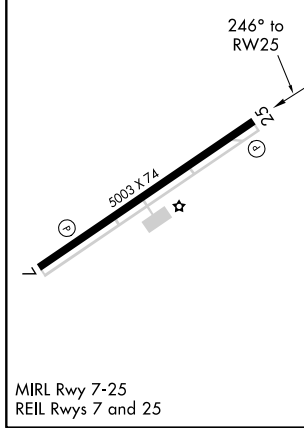
▼ Baro-VNAV NA when using Florence altimeter setting. For uncompensated Baro-VNAV systems, LNAV/VNAV NA below -15°C or above 47°C. Rwy 25 helicopter visibility reduction below ¾ SM NA. When local altimeter setting not received, use Florence altimeter setting and increase all DA 61 feet and MDA 80 feet. Increase LPV all Cats, and LNAV Cat C and D visibility ¼ mile.

MISSED APPROACH: Climb to 2500 direct LONCI and hold.

AWOS-3PT <b>123.825</b>	FLORENCE APP CON * <b>118.6 341.7</b>	UNICOM <b>122.8</b> (CTAF)
----------------------------	--	-------------------------------



ELEV 147	TDZE 147
----------	----------



CATEGORY	A	B	C	D
LPV DA	441-1 294 (300-1)			
LNAV/VNAV DA	621-1¾ 474 (500-1¾)			
LNAV MDA	680-1	533 (600-1)	680-1½ 533 (600-1½)	680-1¾ 533 (600-1¾)

SE-2, 16 JUL 2020 to 13 AUG 2020

SE-2, 16 JUL 2020 to 13 AUG 2020