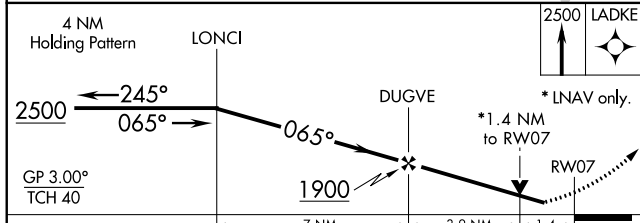
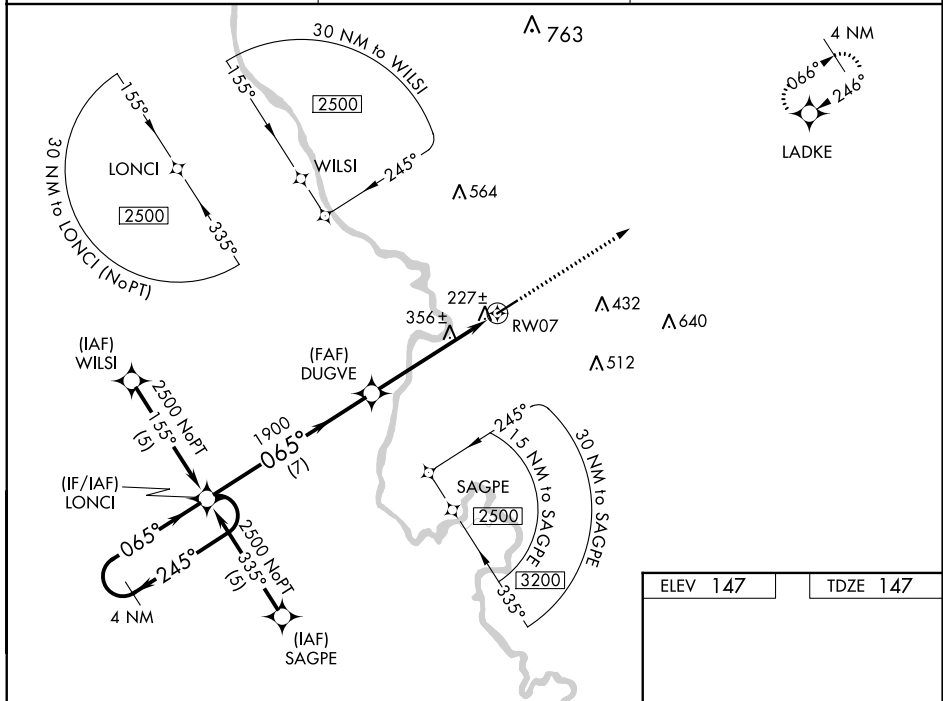


WAAS CH <b>77818</b> <b>W07A</b>	APP CRS <b>065°</b>	Rwy Idg <b>5003</b> TDZE <b>147</b> Apt Elev <b>147</b>
--	------------------------	---

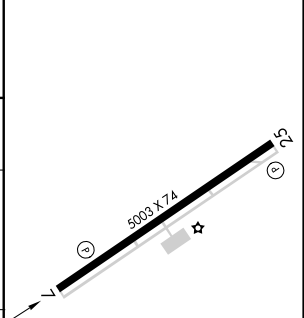
**RNAV (GPS) RWY 7**  
MARLBORO COUNTY JETPORT-H E AVENT FIELD (BBP)

RNP APCH.  
 ▼ Baro-VNAV NA when using Florence altimeter setting. For uncompensated Baro-VNAV systems, LNAV/VNAV NA below -15°C or above 48°C. Rwy 7 helicopter visibility reduction below ¾ SM NA. When local altimeter setting not received, use Florence altimeter setting and increase all DA 61 feet and MDA 80 feet; increase LPV all Cats, LNAV/VNAV all Cats, and LNAV Cats C and Cat D visibility ¼ mile. VDP NA with Florence altimeter setting.  
 ⚠ MISSED APPROACH: Climb to 2500 direct LADKE and hold.

AWOS-3PT <b>123.825</b>	FLORENCE APP CON ★ <b>118.6 341.7</b>	UNICOM <b>122.8 (CTAF)</b>
----------------------------	--	-------------------------------



ELEV 147	TDZE 147
----------	----------



CATEGORY	A	B	C	D
LPV DA	437-1 290 (300-1)			
LNAV/VNAV DA	507-1¼ 360 (400-1¼)			
LNAV MDA	620-1 473 (500-1)	620-1¼ 473 (500-1¼)	620-1½ 473 (500-1½)	

065° to RW07  
 MRL Rwy 7-25  
 REIL Rws 7 and 25

SE-2, 16 JUL 2020 to 13 AUG 2020

SE-2, 16 JUL 2020 to 13 AUG 2020