

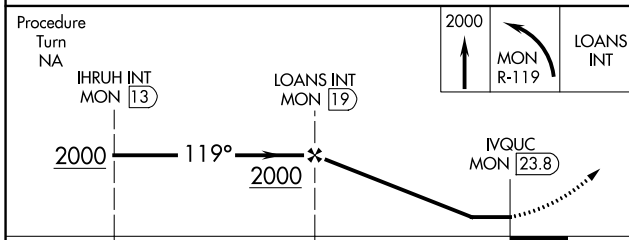
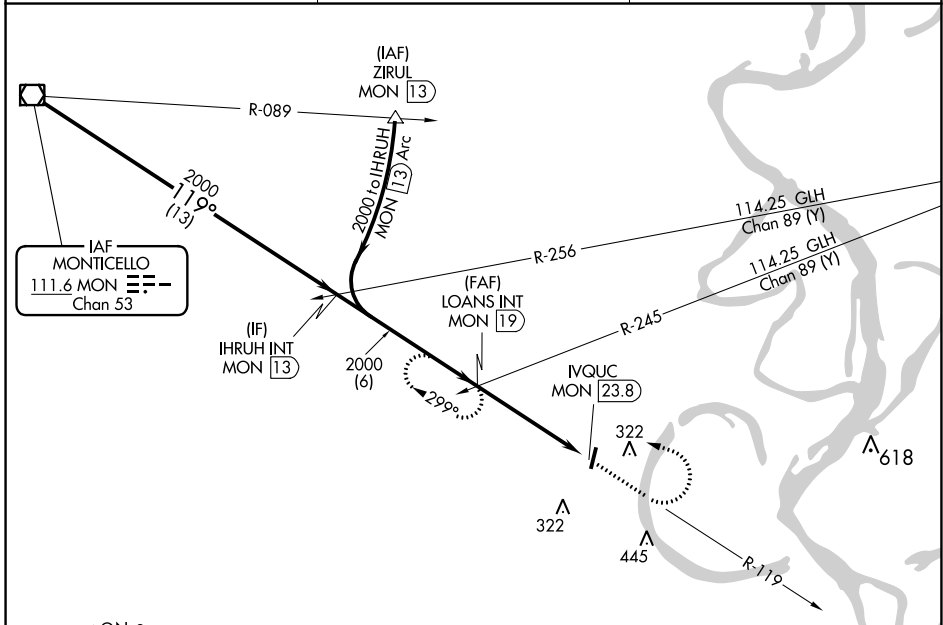
VOR/DME MON <b>111.6</b> Chan <b>53</b>	APP CRS <b>119°</b>	Rwy Idg TDZE Apt Elev	<b>N/A</b> <b>N/A</b> <b>126</b>
---	------------------------	-----------------------------	--

**VOR-A**  
LAKE VILLAGE MUNI (M32)

**▼** Circling NA east of runway 1-19. Use Greenville, MS altimeter setting; when not received use Monticello altimeter setting and increase all MDA 60 feet. Increase Cat C visibility ¼ mile. Helicopter visibility reduction below 1 SM NA. Procedure NA at night.

**▲ NA** MISSED APPROACH: Climb to 2000 then left turn on MON VOR/DME R-119 to LOANS INT/19 DME and hold.

GLH ASOS <b>125.525</b>	MEMPHIS CENTER <b>135.875 269.35</b>	CTAF <b>122.90</b>
----------------------------	---	-----------------------



CATEGORY	A	B	C	D	FAF to MAP 4.8 NM					
	680-1 554 (600-1)	720-1 594 (600-1)	720-1½ 594 (600-1½)	720-2 594 (600-2)	Knots	60	90	120	150	180
<b>C</b> CIRCLING					Min:Sec	4:48	3:12	2:24	1:55	1:36

SC-1, 16 JUL 2020 to 13 AUG 2020

SC-1, 16 JUL 2020 to 13 AUG 2020