

WAAS CH 50321 W06A	APP CRS 062°	Rwy Idg TDZE 1446 Apt Elev 1448	4111
--	------------------------	---	-------------

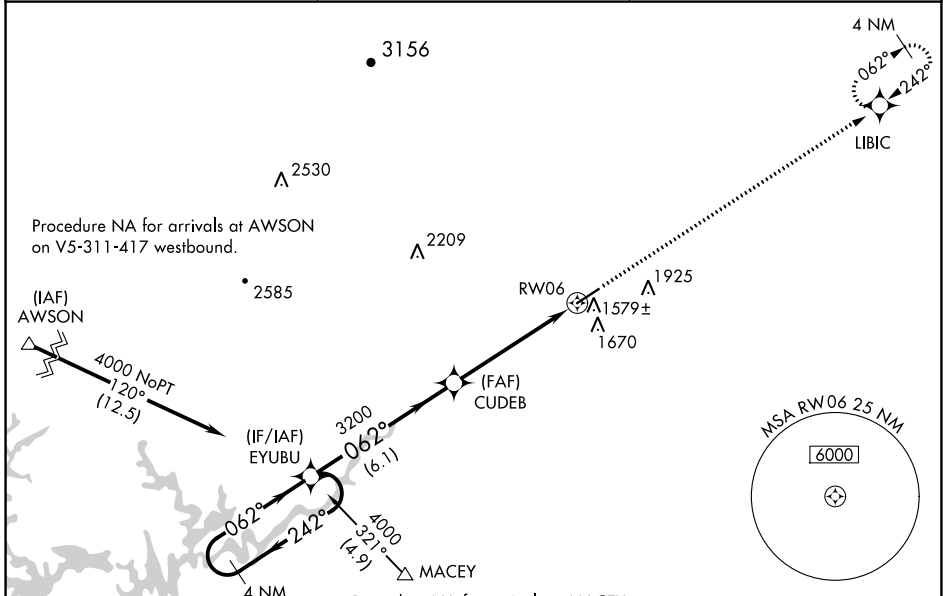
RNAV (GPS) RWY 6

HABERSHAM COUNTY (AJR)

NA DME/DME RNP-0.3 NA. Rwy 6 helicopter visibility reduction below 3/4 SM NA. Rwy 24 helicopter visibility reduction below 1 SM NA. Circling Rwy 24 at night NA. VDP NA with Gainesville altimeter setting. When local altimeter setting not received use Gainesville altimeter setting and increase all DA 69 feet and MDA 80 feet; increase visibility LPV and LNAV/VNAV 1/4 mile all Cats, LNAV C and D 1/8 mile, and Circling Cat C and D 1/4 mile. For uncompensated Baro-VNAV systems, LNAV/VNAV NA below -17°C (2°F) or above 35°C (95°F). Baro-VNAV NA with Gainesville altimeter setting.

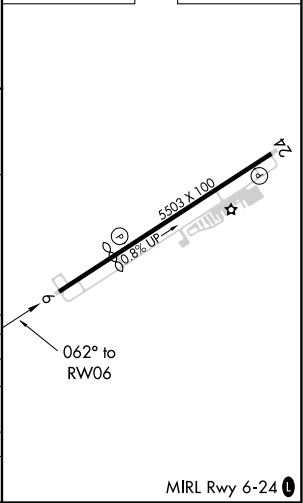
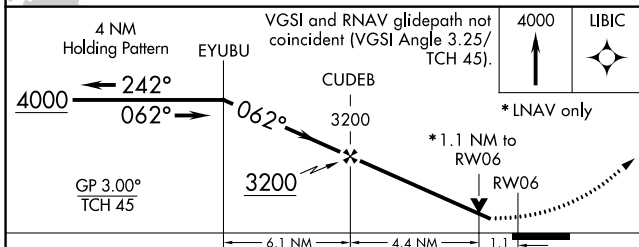
MISSED APPROACH:
Climb to 4000 direct LIBIC and hold.

AWOS-3 119.175	ATLANTA CENTER 134.8 379.95	UNICOM 122.7 (CTAF) 0
--------------------------	---------------------------------------	---------------------------------



Procedure NA for arrivals at MACEY on V222 southwest bound.

ELEV 1448	TDZE 1446
-----------	-----------



CATEGORY	A	B	C	D
LPV DA		1740-1	294 (300-1)	
LNAV/VNAV DA		1798-1 1/8	352 (400-1 1/8)	
LNAV MDA	1840-1	394 (400-1)	1840-1 1/4	394 (400-1 1/4)
CIRCLING	2060-1 612 (700-1)	2100-1 652 (700-1)	2100-1 3/4 652 (700-3/4)	2240-2 1/2 792 (800-2 1/2)

SE-4, 16 JUL 2020 to 13 AUG 2020

SE-4, 16 JUL 2020 to 13 AUG 2020