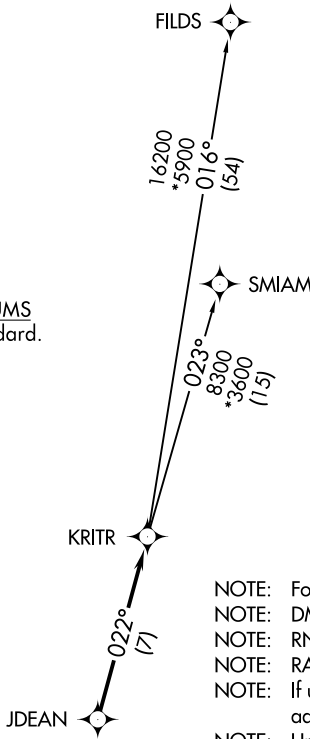


# KRITR FIVE DEPARTURE (RNAV)

ASOS  
135.725  
CLNC DEL  
127.2  
UNICOM  
123.0 (CTAF)  
CHARLOTTE DEP CON  
120.05 257.2

**TOP ALTITUDE:  
3000**

TAKEOFF MINIMUMS  
Rwys 3, 21: Standard.



- NOTE: For turbojets only.
- NOTE: DME/DME/IRU or GPS required.
- NOTE: RNAV 1.
- NOTE: RADAR required.
- NOTE: If unable to accept climb rates, advise ATC on initial contact.
- NOTE: Upon reaching 10000 MSL, accelerate to and maintain 280K, if unable advise ATC.

### ▼ DEPARTURE ROUTE DESCRIPTION

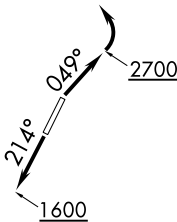
TAKEOFF RWY 3: Climb heading 049° to 2700 before turning left.

TAKEOFF RWY 21: Climb heading 214° to 1600 before proceeding north.

Climb on heading assigned by ATC, expect RADAR vectors to JDEAN, then on track 022° to KRITR, then on assigned transition. Maintain 3000, expect filed altitude within 10 minutes after departure.

FILDS TRANSITION (KRITR5.FILDS)

SMIAM TRANSITION (KRITR5.SMIAM)



NOTE: Chart not to scale.

SE-2, 16 JUL 2020 to 13 AUG 2020

SE-2, 16 JUL 2020 to 13 AUG 2020