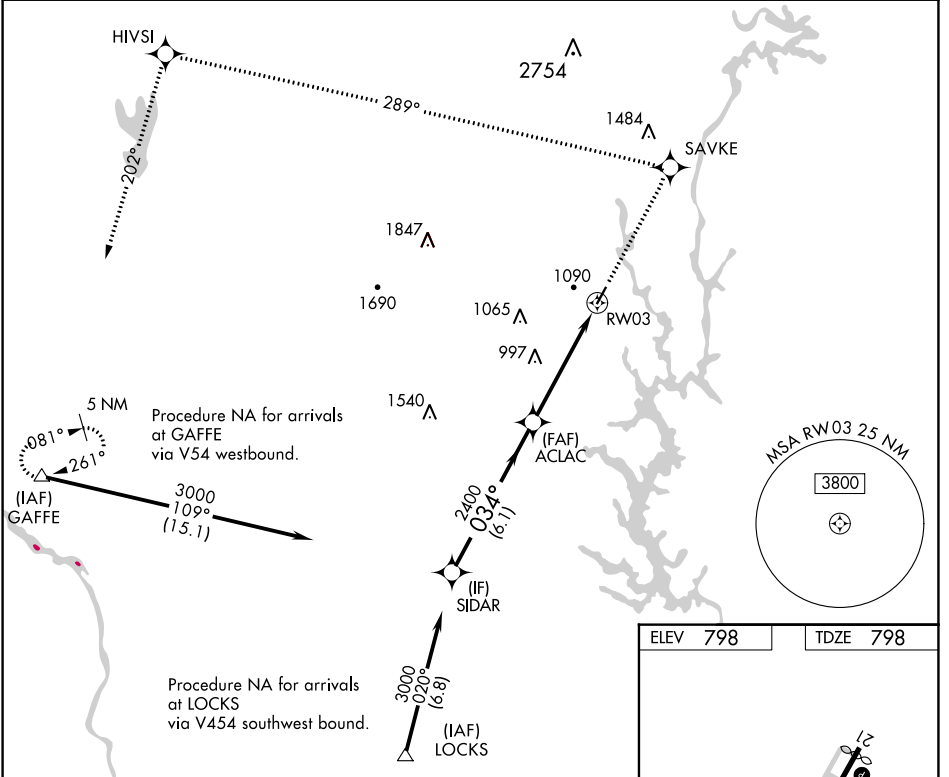


|  |                        |                             |   |
|--|------------------------|-----------------------------|---|
| WAAS<br>CH <b>90302</b><br><b>W03A</b> | APP CRS<br><b>034°</b> | Rwy Idg<br>TDZE<br>Apt Elev | <b>3770</b><br><b>798</b><br><b>798</b> |
|--|------------------------|-----------------------------|---|

# RNAV (GPS) RWY 3

GASTONIA MUNI (AKH)

|   |  |                          |   |
|---|--|--------------------------|---|
| RNP APCH.<br>▼ If local altimeter setting not received, use Charlotte Douglas Intl altimeter setting and increase all DAs/MDAs 40 feet. Inoperative table does not apply. |  | ODALS<br>☉ ⋮             | MISSED APPROACH: Climb to 3200 direct SAVKE and via 289° track to HIVSI and 202° track to GAFFE and hold. |
| ASOS<br><b>135.725</b>  | CHARLOTTE APP CON<br><b>120.05 257.2</b> | CLNC DEL<br><b>127.2</b> | UNICOM<br><b>123.0 (CTAF) 0</b>   |



SE-2, 16 JUL 2020 to 13 AUG 2020

SE-2, 16 JUL 2020 to 13 AUG 2020

|  |                      |             |                      |           |
|--|----------------------|-------------|----------------------|-----------|
| VGSi and RNAV glidepath not coincident (VGSi Angle 3.00/TCH 26). |                      | 3200 SAVKE  | HIVSI                | GAFFE     |
| Procedure Turn NA  |                      | ↑           | ☉ tr 289°            | △ tr 202° |
| GP 3.00°   | TCH 40               | 3000        | 2400                 |           |
| SIDAR  |                      | ACLAC       |                      | RWY 3     |
| 3000   |                      | 2400        |                      |           |
| 6.1 NM   |                      | 4.8 NM      |                      |           |
| CATEGORY   | A                    | B           | C                    | D         |
| LPV DA   | 1118-1¼ 320 (400-1¼) |             |                      | NA        |
| LNAV MDA   | 1440-1               | 642 (700-1) | 1440-1¾ 642 (700-1¾) | NA        |

