

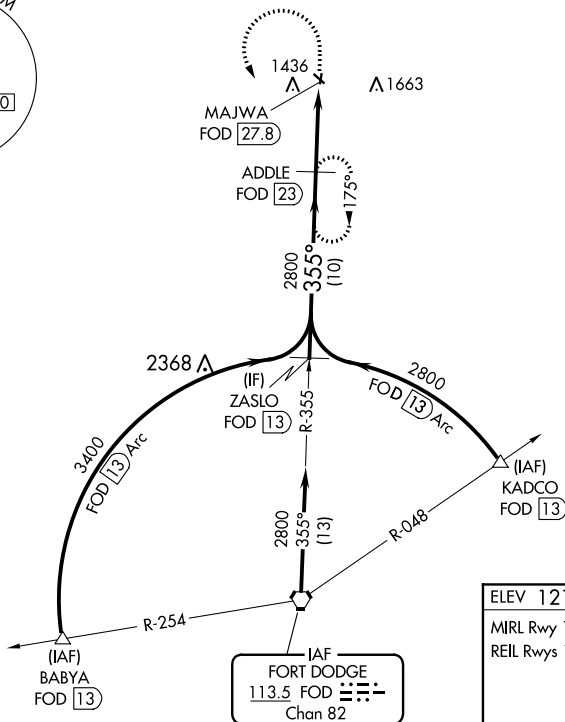
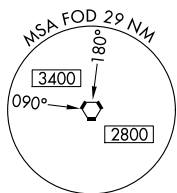
VORTAC FOD <b>113.5</b> Chan <b>82</b>	APP CRS <b>355°</b>	Rwy Idg TDZE Apt Elev <b>N/A</b> <b>N/A</b> <b>1216</b>
--	------------------------	--

**VOR/DME-A**  
ALGONA MUNI (A.X.A)

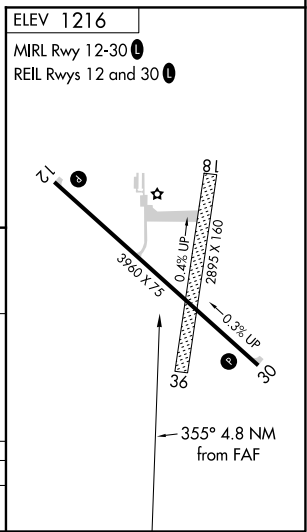
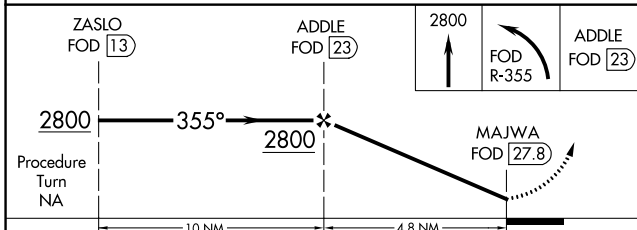
**⚠** When local altimeter setting not received, use Forest City altimeter setting and increase all MDA 80 feet. Circling to Rwy 12 NA at night. Circling NA to Rwys 18 and 36.

**MISSED APPROACH:** Climb to 2800 then left turn on FOD VORTAC R-355 to ADDLE/23 DME and hold.

AWOS-3 <b>118.475</b>	MINNEAPOLIS CENTER <b>134.0 288.3</b>	UNICOM <b>122.8 (CTAF) 0</b>
--------------------------	--	---------------------------------



Procedure NA for arrivals on FOD VORTAC airway radial 003.



CATEGORY	A	B	C	D
CIRCLING	1780-1 564 (600-1)	1800-1¼ 584 (600-1¼)	NA	

NC-3, 16 JUL 2020 to 13 AUG 2020

NC-3, 16 JUL 2020 to 13 AUG 2020