

WAAS CH 65734 W27A	APP CRS 272°	Rwy Idg TDZE Apt Elev	5000 861 861
--	------------------------	-----------------------------	---

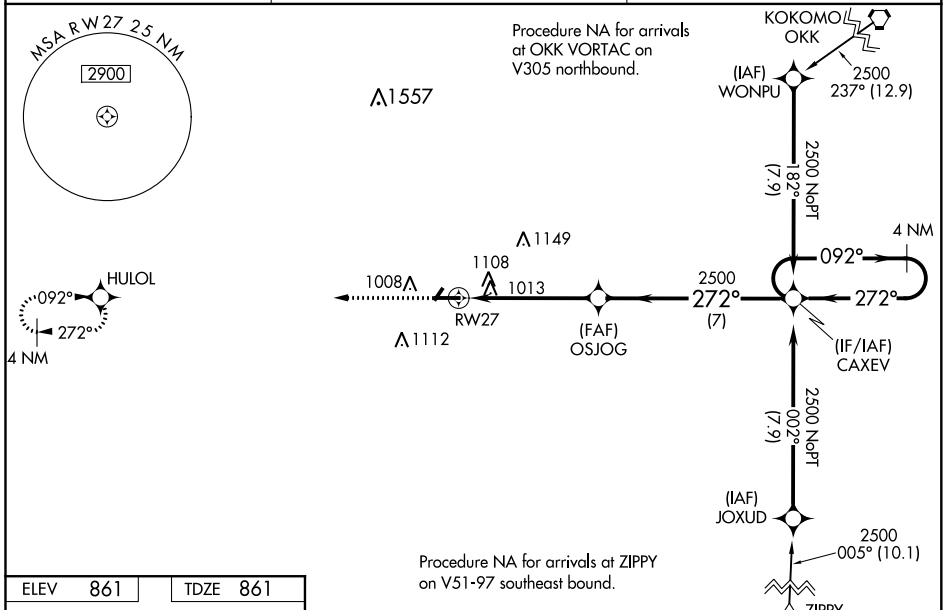
RNAV (GPS) RWY 27

FRANKFORT MUNI (F'KR)

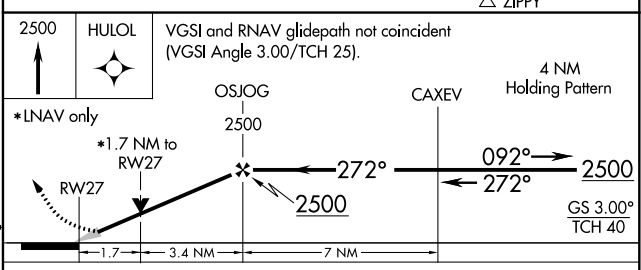
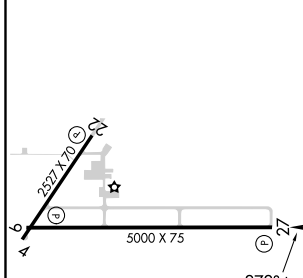
NA Baro-VNAV NA when using Indianapolis Executive altimeter setting. For uncompensated Baro-VNAV systems, LNAV/VNAV NA below -16°C (4°F) or above 54°C (130°F). DME/DME RNP-0.3 NA. VDP NA with Indianapolis Executive altimeter setting. When local altimeter setting not received, use Indianapolis Executive altimeter setting and increase all DA 56 feet and all MDA 60 feet; increase LPV all Cats visibility 1/8 mile, LNAV Cats C/D visibility 1/8 mile, and Circling Cats C/D visibility 1/4 mile.

MISSED APPROACH: Climb to 2500 direct HULOL and hold.

AWOS-3 124.325	GRISSOM APP CON * 123.85 291.675	UNICOM 123.0 (CTAF) 0
--------------------------	--	---------------------------------



ELEV 861	TDZE 861
-----------------	-----------------



CATEGORY	A	B	C	D
LPV DA	1111-7/8 250 (300-7/8)			
LNAV/VNAV DA	1476-2 1/2 615 (700-2 1/2)			
LNAV MDA	1420-1	559 (600-1)	1420-1 1/8	559 (600-1 1/8)
C CIRCLING	1460-1	599 (600-1)	1520-1 3/4	1520-2
			659 (700-1 1/4)	659 (700-2)

EC-2, 16 JUL 2020 to 13 AUG 2020

EC-2, 16 JUL 2020 to 13 AUG 2020