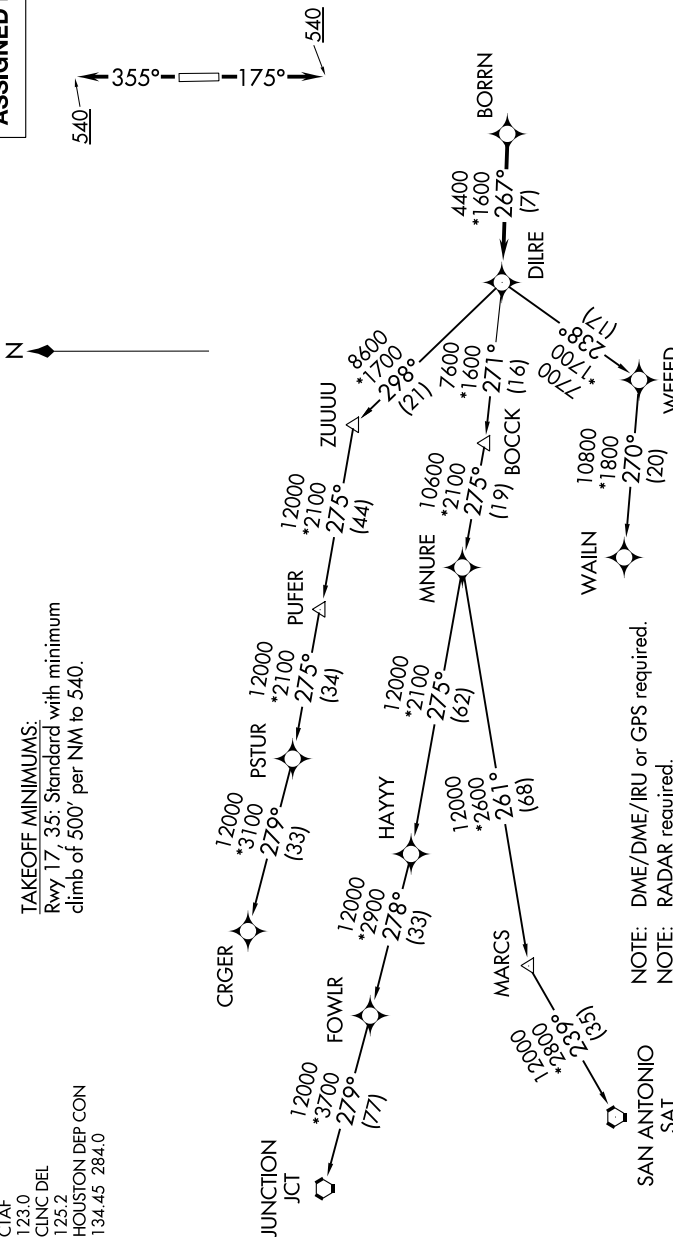


BORRN FOUR DEPARTURE (RNAV)

TOP ALTITUDE:  
ASSIGNED BY ATC



TAKEOFF MINIMUMS:

Rwy 17, 35: Standard with minimum climb of 500' per NM to 540.

ASOS  
119.925  
CTAF  
123.0  
CLNC DEL  
125.2  
HOUSTON DEP CON  
134.45 284.0

NOTE: DME/DME/IRU or GPS required.

NOTE: RADAR required.

NOTE: RNAV 1.

NOTE: CRGR TRANSITION ATC assigned only for aircraft departing 54T, AXH, EFD, GLS, HPY, IWS, LBX, LVJ, SGR, TME, T00, T41.

(NARRATIVE ON FOLLOWING PAGE)

NOTE: Chart not to scale.

BORRN FOUR DEPARTURE (RNAV)