

# STRYA SEVEN DEPARTURE (RNAV)

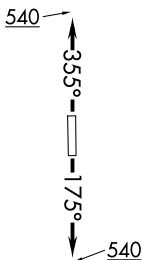
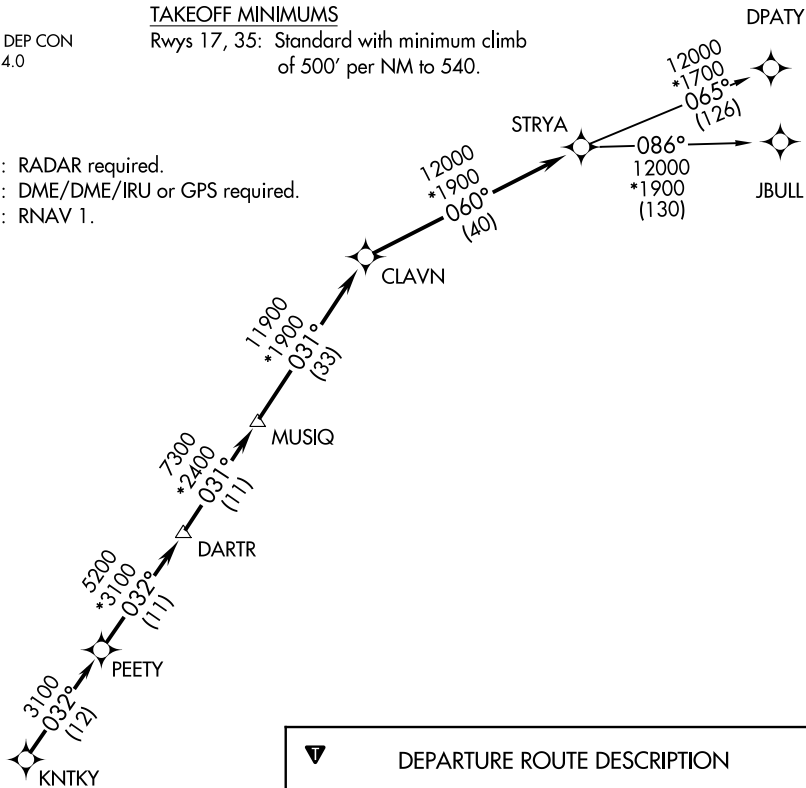
**TOP ALTITUDE: ASSIGNED BY ATC**

ASOS  
119.925  
CTAF  
123.0  
CLNC DEL  
125.2  
HOUSTON DEP CON  
134.45 284.0

### TAKEOFF MINIMUMS

Rwys 17, 35: Standard with minimum climb  
of 500' per NM to 540.

NOTE: RADAR required.  
NOTE: DME/DME/IRU or GPS required.  
NOTE: RNAV 1.



NOTE: Chart not to scale.



### DEPARTURE ROUTE DESCRIPTION

TAKEOFF RWY 17: Climb heading 175° to 540 for  
RADAR vectors to KNTKY, thence . . . .

TAKEOFF RWY 35: Climb heading 355° to 540 for  
RADAR vectors to KNTKY, thence . . . .

. . . . on track 032° to PEETY, then on track 032° to  
DARTR, then on track 031° to MUSIQ, then on track  
031° to CLAVN, then on track 060° to STRYA, then  
on (transition). Maintain ATC assigned altitude.  
Expect filed altitude 10 minutes after departure.

DPATY TRANSITION (STRYA7.DPATY)

JBULL TRANSITION (STRYA7.JBULL)