

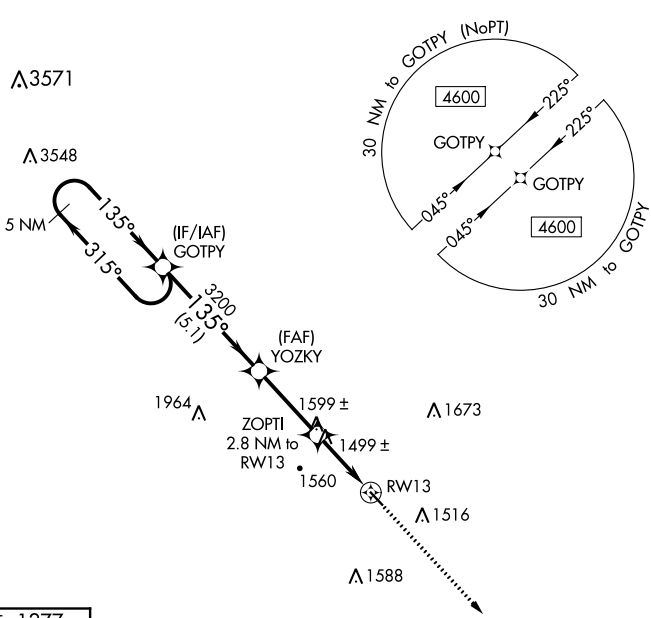
APP CRS	Rwy Idg	<b>3634</b>
<b>135°</b>	TDZE	<b>1277</b>
	Apt Elev	<b>1311</b>

# RNAV (GPS) RWY 13

AVA BILL MARTIN MEMORIAL (AOV)

RNP APCH.	Procedure NA at night. Use Branson altimeter setting, if not received use Springfield Branson Natl altimeter setting and increase all MDA 20 feet. Rwy 13 helicopter visibility reduction below 1 SM NA.	MISSED APPROACH: Climb to 3500 direct GAHSU and hold.
⚠ NA		

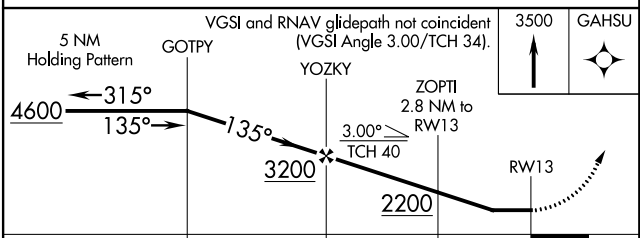
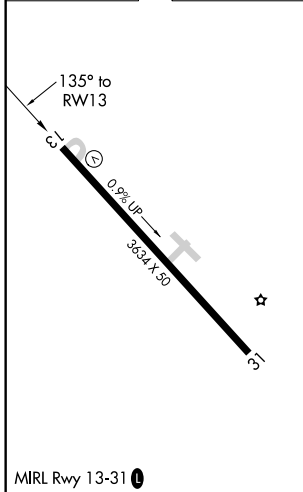
BBG AWOS-3 <b>124.625</b>	SPRINGFIELD APP CON <b>126.35</b>	UNICOM <b>122.7 (CTAF) 0</b>
------------------------------	--------------------------------------	---------------------------------



NC-3, 16 JUL 2020 to 13 AUG 2020

NC-3, 16 JUL 2020 to 13 AUG 2020

ELEV 1311	TDZE 1277
-----------	-----------



CATEGORY	A	B	C	D
LNAV MDA	1840-1	563 (600-1)		NA