

WAAS CH 77740 W15A	APP CRS 148°	Rwy Ldg TDZE Apt Elev	4000 270 270
--	------------------------	-----------------------------	---

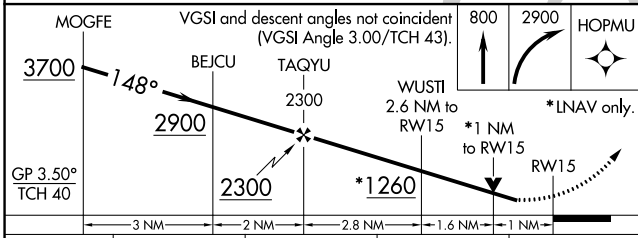
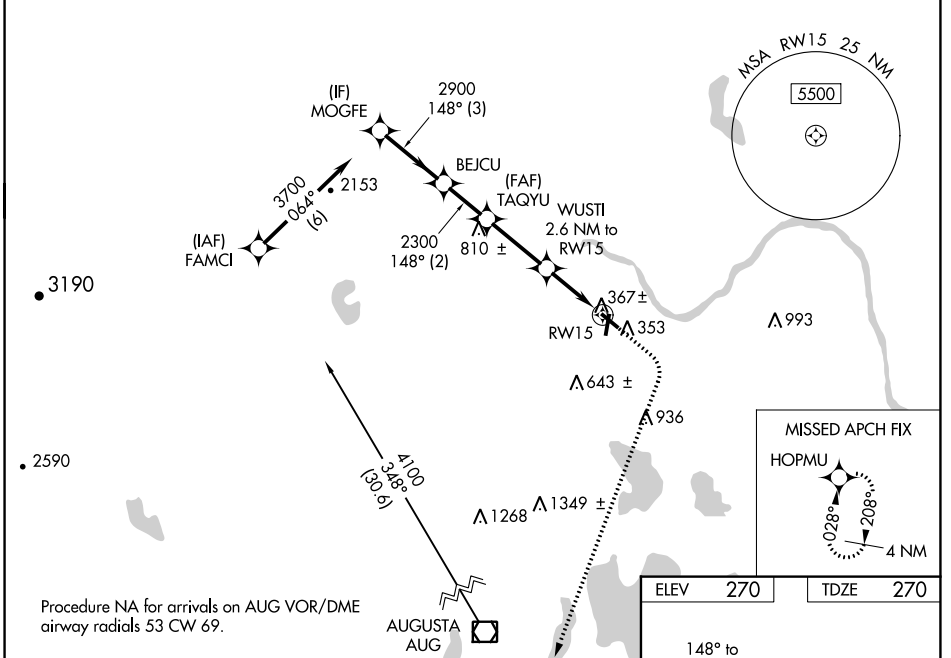
RNAV (GPS) RWY 15

CENTRAL MAINE ARPT OF NORRIDGEWOCK (OWK)

▽ For uncompensated Baro-VNAV systems, LNAV/VNAV NA below -15°C (5°F) or above 54°C (130°F). Baro-VNAV and VDP NA when using Augusta State altimeter setting.
△ NA Rwy 15 helicopter visibility reduction below 3/4 SM NA. DME/DME RNP-0.3 NA.
 When local altimeter setting not received, use Augusta State altimeter setting; increase LPV DA to 607 feet, LNAV/VNAV DA 659 feet and LNAV/VNAV visibility all Cats 1/2 SM. Increase all MDA 80 feet and LNAV Cat C visibility 1/4 SM and Circling Cat C visibility 1/2 SM. Circling Rwy 3, 21, 33 NA at night.

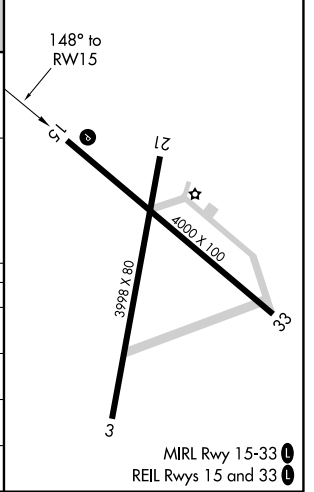
MISSED APPROACH:
Climb to 800 then climbing right turn to 2900 direct HOPMU and hold.

AWOS-AV 122.8	PORTLAND APP CON ★ 128.35 299.2	UNICOM 122.8 (CTAF) 0
-------------------------	---	---------------------------------



ELEV 270	TDZE 270
----------	----------

CATEGORY	A	B	C	D
LPV DA	540-1	270 (300-1)		NA
LNAV/VNAV DA	592-1	322 (400-1)		NA
LNAV MDA	680-1	410 (500-1)	680-1 1/8 410 (500-1 1/8)	NA
C CIRCLING	800-1 530 (600-1)	960-1 690 (700-1)	1080-2 1/4 810 (900-2 1/4)	NA



NE-1, 16 JUL 2020 to 13 AUG 2020

NE-1, 16 JUL 2020 to 13 AUG 2020