

VOR/DME AUG <b>114.95</b> Chan <b>96 (Y)</b>	APP CRS <b>010°</b>	Rwy Idg <b>3998</b> TDZE <b>268</b> Apt Elev <b>270</b>
--	------------------------	---

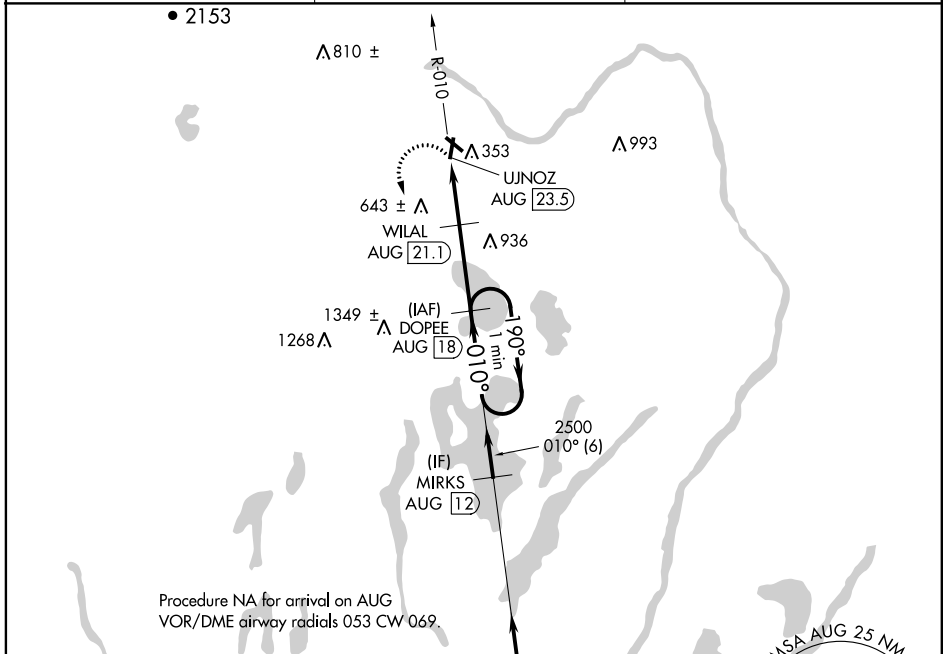
# VOR/DME RWY 3

CENTRAL MAINE AIRPORT OF NORRIDGEWOCK (OWK)

**⚠** When local altimeter setting not received, use Augusta State altimeter setting and increase all MDA 80 feet; increase S-03 Cat A visibility and Circling Cat C visibility ¼ mile. Procedure NA at night. Helicopter visibility reduction below 1 SM NA.

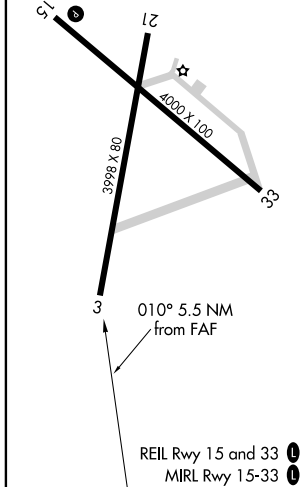
**MISSED APPROACH:** Climbing left turn to 2500 on AUG VOR/DME R-010 to DOPEE/ AUG 18 DME and hold.

AWOS-AV <b>122.8</b>	PORTLAND APP CON ★ <b>128.35 299.2</b>	UNICOM <b>122.8 (CTAF) 0</b>
-------------------------	---	---------------------------------

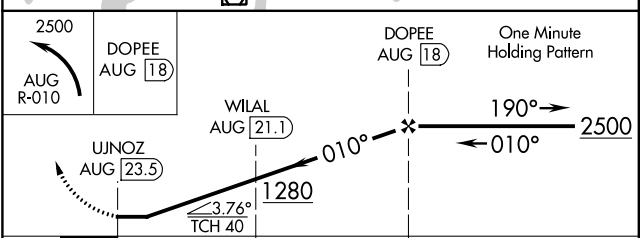
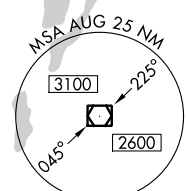


Procedure NA for arrival on AUG VOR/DME airway radials 053 CW 069.

ELEV 270	TDZE 268
----------	----------



IAF AUGUSTA  
114.95 AUG  
Chan 96 (Y)



CATEGORY	A	B	C	D
S-3	1100-1 832 (900-1)	1100-1¼ 832 (900-1¼)	1100-2½ 832 (900-2½)	NA
<b>C</b> CIRCLING	1100-1¼	830 (900-1¼)	1100-2½ 830 (900-2½)	NA

NE-1, 16 JUL 2020 to 13 AUG 2020

NE-1, 16 JUL 2020 to 13 AUG 2020