

LOC I-RGK <b>110.1</b>	APP CRS <b>091°</b>	Rwy Idg TDZE Apt Elev	<b>5010</b> <b>778</b> <b>778</b>
---------------------------	------------------------	-----------------------------	---

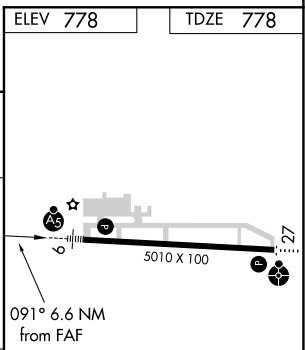
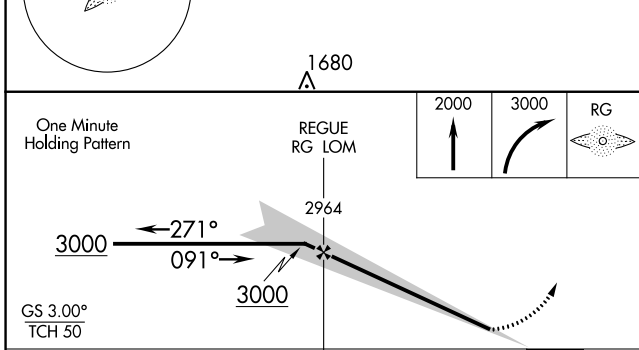
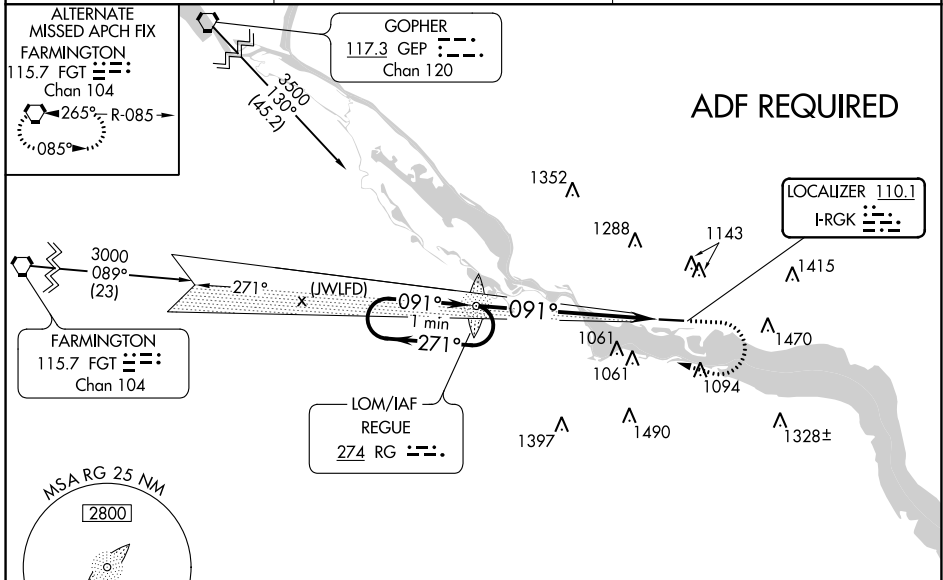
# ILS or LOC RWY 9

RED WING RGNL (RGK)

**ADF Required.** When local altimeter setting not received, use South St. Paul altimeter setting and increase all DA 72 feet and all MDA 80 feet; increase S-LOC 9 Cat C/D visibility 1/8 mile, and Circling Cat A/C/D visibility 1/4 mile. For inop MALS, increase S-LOC 9 Cat C/D visibility 1/2 mile. For inop MALS when using South St. Paul altimeter setting, increase S-ILS 9 all Cats visibility 3/8 mile, and S-LOC 9 Cat C/D visibility 3/4 mile.

**MALS**  
**MISSED APPROACH:** Climb to 2000 then climbing right turn to 3000 direct REGUE LOM and hold.

AWOS-3 <b>119.25</b>	MINNEAPOLIS APP CON <b>121.2 335.65</b>	UNICOM <b>123.05 (CTAF)</b>
-------------------------	--	--------------------------------



CATEGORY	A	B	C	D
S-ILS 9	978-1/2 200 (200-1/2)			
S-LOC 9	1520-1/2 742 (800-1/2)	1520-3/4 742 (800-3/4)	1520-1 3/4 742 (800-1 3/4)	742 (800-1 3/4)
CIRCLING	1520-1 742 (800-1)	1520-1 1/4 742 (800-1 1/4)	1540-2 1/4 762 (800-2 1/4)	1540-2 1/2 762 (800-2 1/2)

HIRL Rwy 9-27

FAF to MAP 6.6 NM

Knots	60	90	120	150	180
Min:Sec	6:36	4:24	3:18	2:38	2:12

NC-1, 16 JUL 2020 to 13 AUG 2020

NC-1, 16 JUL 2020 to 13 AUG 2020